

MY25+ RAM Blade Instructions



For proper installation and best possible fit, please read all instructions BEFORE you begin.

Important Information

BEFORE you begin the installation process:

- Carefully read all instructions.
- Verify that all parts are included by checking the contents of your kit.

If any parts are missing or appear damaged, please contact our customer service team for assistance.

Customer Service

For support, please contact the Putco team, available Monday to Friday 8:30 AM to 5PM (Central Time).

1 800 247 3974

support@putco.com

Supported Vehicles

MAKE	MODEL	YEAR
RAM	ALL	2025+

Recommended Tools + Supplies

T25 Torx Driver	Zip Ties
Trim Removal Tool	Dielectric Grease

Kit Contents

Quick-Connect Tail Harness
(529043/529044)

Relay Power Wire Harness
(529035)

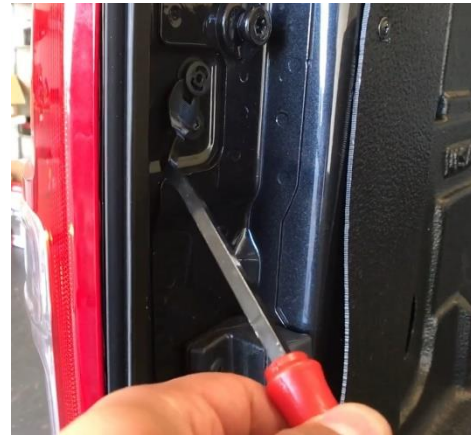
Step by Step Installation

1. Open the tailgate of your vehicle.
2. Starting on the Driver's side of the vehicle, remove the cable support for the tailgate.

NOTE: Only remove one cable support at a time so the tailgate always remains supported on one side.



3. Using a trim removal tool, pull out the center of the two plastic trim clips in the sidewall of the truck bed. Then remove the clips entirely.
4. Remove the two screws using a T25 Torx bit and driver



5. Carefully pull the taillight away from the truck until it pops loose.
6. Disconnect the OEM wiring harness from the taillight.
7. Locate the Putco Quick Connect harness from your kit. Identify the end with multiple drops, labeled "Driver".



8. Route the Tee portion of this harness up from the bottom of the truck and plug the mating connector on this end into the taillight.
9. Plug the other end into the OEM wiring harness that was disconnected from the taillight in Step 6.
10. Reinstall the taillight with the original hardware uninstalled in Steps 2-4
11. Repeat Steps 2-10 for the passenger (Right) side of the vehicle.



12. Clean the vehicle surface in the mounting location of the blade with isopropyl alcohol. Allow to dry before mounting.
13. Locate the Blade, lightbar, and mounting brackets included in your kit. Mount the brackets to the vehicle surface behind the tailgate so that the blade is level and visible.

NOTE: The tailgate can be removed to make this step easier.

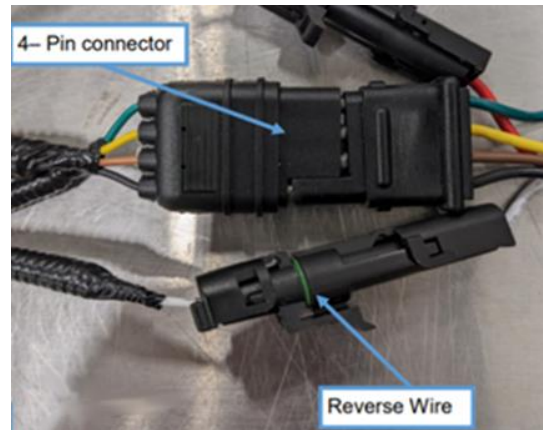


14. Install the Blade lightbar to the mounting brackets, ensure side with the wires that exit the lightbar are on the driver's (left) side of the vehicle.
15. Route the wires and driver box underneath the truck.
16. Connect the 4-pin on the driver box to the mating connector on the quick connect harness.



17. Connect the 4-pin on the driver box to the mating connector on the Quick Connect Harness.
18. Connect the 1-pin Weather Pack on the driver box to the mating connector on the Quick Connect Harness.

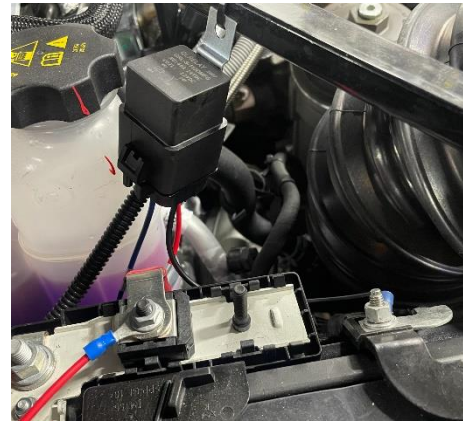
NOTE: Use Dielectric grease on the 4-pin connection to prevent corrosion.



19. Locate the relay power wire harness included in your kit.
20. Move to the front of the vehicle, locate the fuse box and remove the cover.
21. Locate a fuse that is switched with ignition/accessory power.
22. Remove the fuse in the chosen slot and plug it into the add-a-fuse slot on the relay power wire harness.
23. Plug the add-a-fuse into the chosen slot in the vehicle's fuse box.



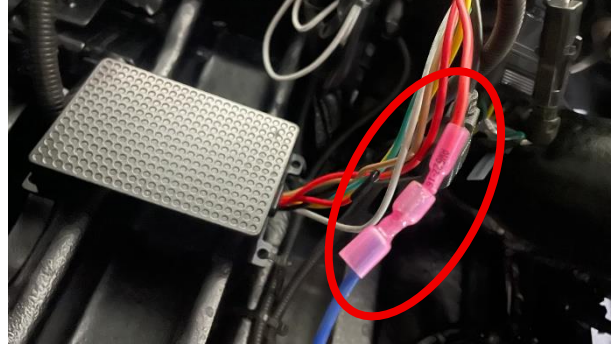
24. Attach the ring terminal on the end of the Red wire running from the relay to a battery positive stud.
25. Install the ring terminal on the Black wire running from the relay to a ground stud.
26. Secure the relay in a safe location using a zip-tie.



27. Route the other end of the relay power wire harness to the back of the truck where the blade driver box is located. Follow OEM wiring where possible and avoid any moving or hot parts. Secure with a zip-tie every 6-12 inches.

28. Plug the spade connector on the relay power wire harness into the mating spade on the Red wire running to the driver box

29. Secure all wiring and the driver box in a safe location beneath the truck.



NOTE:

BEFORE DRIVING THE VEHICLE:

Verify all cables are secured to the vehicle with zip-ties and free from moving or hot parts.

Verify the functionality of both tail lamps and the blade.

Congratulations on completing the installation of your Putco product!
For information regarding your warranty, please visit www.putco.com/warranty.

Issues? Please Contact Our Technical Support Team: 1 800 247 3974



WARNING: Final Inspection required. Inspect product was properly Installed and all installation instructions were followed.



For additional information, please visit our website at www.putco.com!