



TEC SKIN™

Installation Instructions

For Dodge Ram Full Size Trucks



For proper installation and best possible fit, please read all instructions BEFORE you begin.

Important Information

BEFORE you begin the installation process:

- Carefully read all instructions.
- Verify that all parts are included by checking the contents of your kit.

If any parts are missing or appear damaged, please contact our customer service team for assistance.

Customer Service

For support, please contact the Putco team, available Monday to Friday 8:30 AM to 5PM (Central Time).

1 800 247 3974

support@putco.com

Supported Vehicles

MAKE	MODEL	YEAR
DODGE	RAM 1500	2002-2025
DODGE	RAM 2500 & 3500	2003-2025

Recommended Tools + Supplies

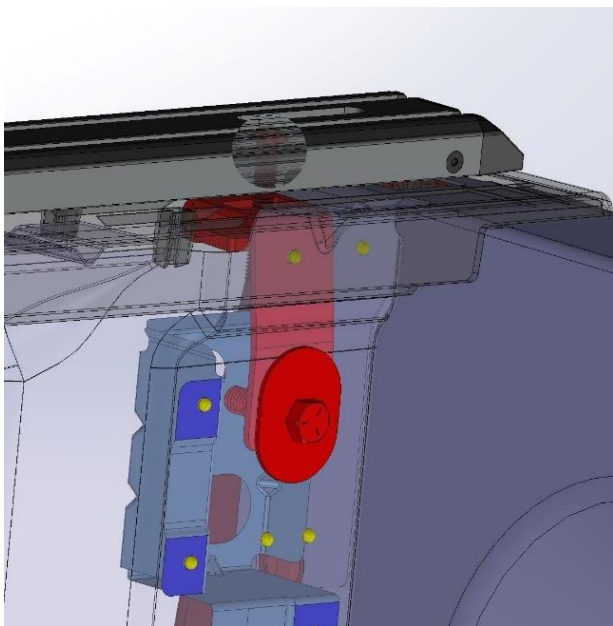
3/16" HEX KEY	9/16" SOCKET AND DRIVER
KNIFE OR RAZOR BLADE	T25 TORX BIT AND DRIVER
FLATHEAD SCREWDRIVER	2.5MM HEX KEY

Kit Contents

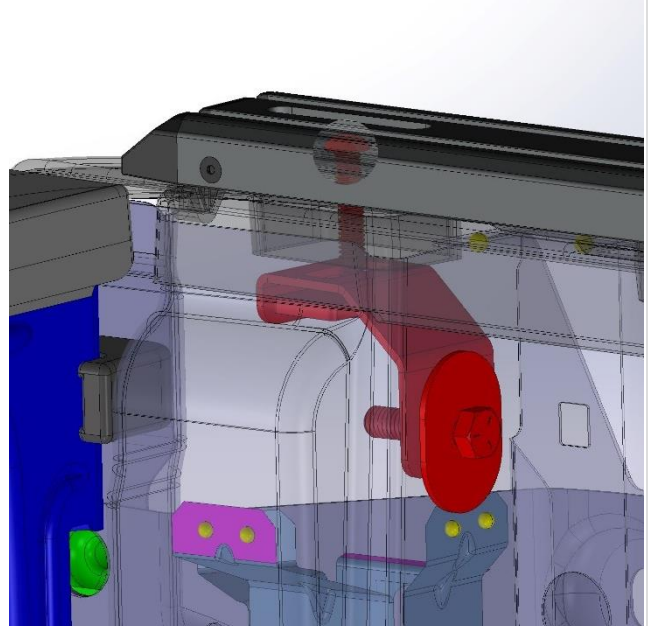
2 TEC SKIN EXTRUSIONS WITH END CAPS	4 MOUNTING BRACKETS	HARDWARE KIT
---	------------------------	--------------

Stake Pocket Assembly

Front



Rear



Step by Step Installation

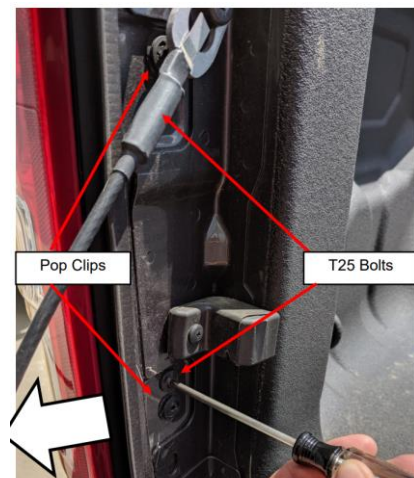
1. Retrieve the four extrusion end caps and eight black M4 screws from your kit, along with the two Tec Skin aluminum extrusions.



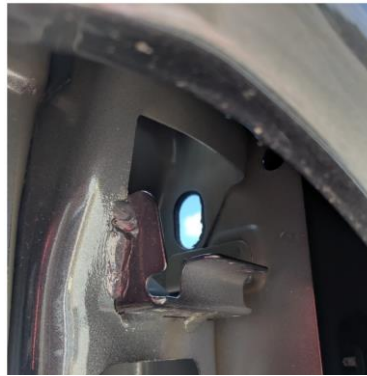
2. Push the end caps into the ends of the Tec Skin extrusions so that the threaded holes in the end cap line up with the counter sunk holes in the extrusion.
3. Install the M4 screws into the extrusion and end caps using a 2.5mm hex key.



4. Use a T25 Torx to remove the two screws on the side of each taillamp.
5. Use a flathead screwdriver to remove the two pop clips on the side of each taillamp.



6. Remove both taillamps from the vehicle by pulling straight back. This will expose the inside of the vehicles' rear stake pocket.



7. Use a knife or razor blade to cut open the front and rear stake pockets on your vehicle's bed cap, if not already exposed.



8. Unbox the hardware kit and identify the four threaded plates and 5/16" x 3.25" long bolts.
9. Thread the long bolts halfway into the threaded plates as shown.



10. Identify the front and rear stake pocket brackets
11. Guide the head of the 5/16" bolts through the top of the stake pocket brackets as shown.



12. Unbox the Tec Skin extrusions and lay them on their sides.
13. Identify which end of the extrusion is the rear, it will be marked with a white etch in front of the rear mounting slot, as shown. This end will go towards the tailgate (rear) of the vehicle.



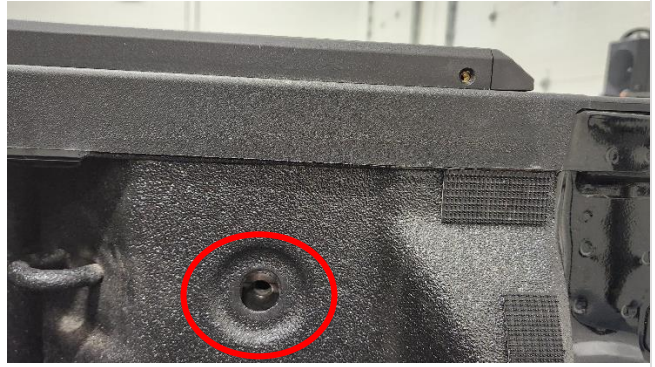
14. Install one rear stake pocket bracket on the side marked with the etch, and one front stake pocket bracket onto the other end of each extrusion by guiding the head of the 5/16" bolt into the single channel on the bottom of the Tec Skin extrusion.



15. Ensure the bed caps are clean and free from dirt and debris.
16. Lay the Tec Skin extrusions onto the bed caps, ensuring the front stake pocket bracket drops into the stake pocket near the cab, and the rear drops into the stake pocket near the tailgate.

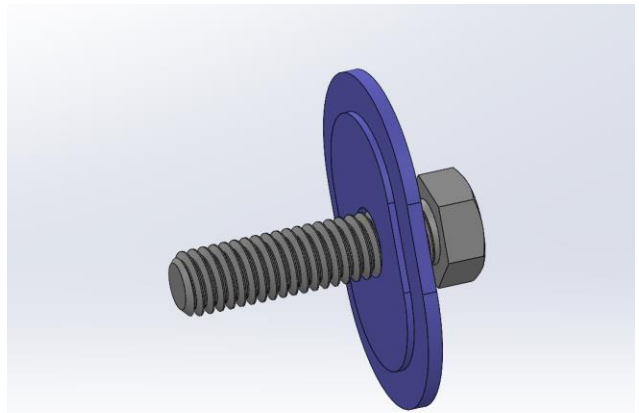


17. Adjust the position of the threaded plate to set the stake pocket brackets to an appropriate height so that the nut clip on the bracket aligns with the hole in the sidewall of the bed.

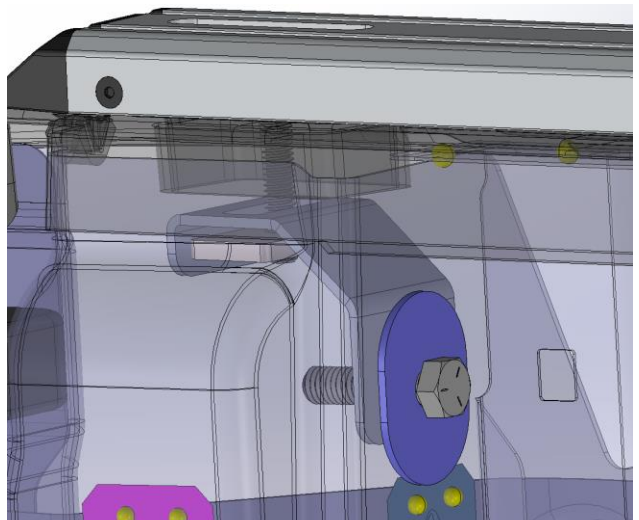


18. Once the height of the stake pocket brackets has been set correctly, obtain the 3/8 x 1.5" bolts from the hardware kit and slide the 3/8" steel washer onto the bolts.

TIP: The protruding side of the aluminum washer goes into the hole in the sidewall of the truck bed.



19. Carefully thread the four 3/8" bolts and washers through the hole in the truck bed sidewall into the nut plate on the stake pocket brackets.
20. Use a 9/16" socket and drive to tighten the 3/8" bolts.



21. Align the front end cap on the Tec Skin extrusion so that it is flush with the bed cap end, as shown. Position the extrusion in the desired final position.
22. Use a 3/16" hex key to tighten down the top bolts on all four corners.
23. Reinstall the vehicle's taillamps.
24. Retighten the 3/8" bolts in the sidewall of the truck bed, check all fasteners are tight and the extrusions are secure before driving the vehicle.



Congratulations on completing the installation of your Putco product!
For information regarding your warranty, please visit www.putco.com/warranty.

Issues? Please Contact Our Technical Support Team: 1 800 247 3974



WARNING: Final Inspection required. Inspect product was properly Installed and all installation instructions were followed.



For additional information, please visit our website at www.putco.com!