

MUD SKINS™ [SOLID]

POLISHED
STAINLESS
STEEL



Putco's proprietary stainless steel features a super 8 mirror finish that delivers the shiniest and most reflective surface and a durable longlasting build that is highly resistant to corrosion.

CARBON
BLACK
HDPE



This finish has a light textured matte black look that is CNCed High-density polyethylene. This material is corrosion resistant, has a temperature range of -60C to 180F, will not crack or fade under UV.

BRUSHED
STAINLESS
STEEL



This option is made from a high Molybdenum 304 stainless steel that has a brushed grain metallic sheen to not only protect your vehicle but give your vehicle a modern industrial look.



FEATURES

- Set consists of 2 premium mud flaps
- Laser cut for precision fit
- Bolted Construction
- Offset design allows for tire clearance
- Flexible material for better debris protection
- Available in polished stainless, brushed stainless and carbon black HDPE finishes
- Features new Hex Shield™ pattern
- Designed for single rear wheel and dual wheel applications.
- 1 year warranty on material defects & failure, Putco's NeveRust™ Limited lifetime warranty

SOLID DEFENSE

PUTCO's Mud Skins™ Solids are custom-fit and deliver protection from rocks, mud, snow buildup and other debris your truck kicks up. Mud Skins™ solid are easy to install and can be mounted in minutes. Available in polished stainless, brushed stainless, or carbon black high-density polyethylene finishes.

MOUNTING BRACKET

The Mounting Bracket on the Mud Skins Solid version is a simplified utilitarian take on the original Mud Skins Hex-Shield. Each mud set is design to align directly with OEM mounts making installation easy. The flat no-recess design is perfect for deflecting debris and makes for an easy to clean surface.

BOLTED STRUCTURE

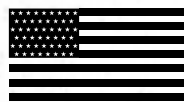
All components are fastened securely with bolts that ensures that your mud flaps will not fall apart when enduring road debris.

ANTI-SAIL WITH HEX-SHIELD™ PATTERN

The Anti-Sail provides extra weight to keep the GorillaTuff™ Splash Guard in place while traveling down road. The added pressure from wind can cause lift, which can create a larger gap between the road surface and the bottom edge of the rubber. This additional piece adds an accent point with a critical function. By reducing the gap, Mud Skins Solid does a better job protecting the items being towed from damaging road debris.

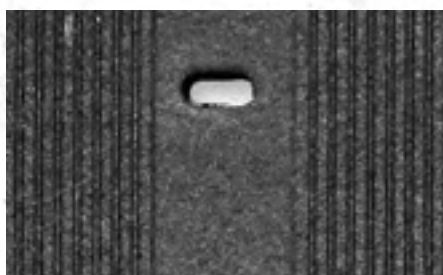
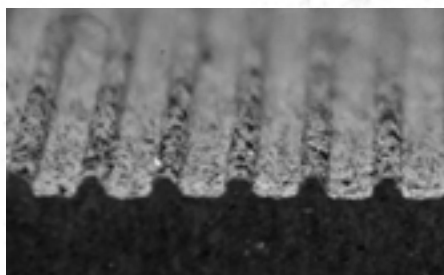
SETBACK DESIGN

Mud Skins utilize a hefty 18 guage stainless steel mounting bracket that is offset to position the Gorillatuff® Splash Guards back to allow more room for larger tires while still providing the protection and clearance that you need. Mud Skins will not interfere with your preference for big tires and dirt roads.



**MADE IN
THE USA**

GORILLATUFF SPLASHGUARDS™

CHANNELED
SURFACEREINFORCED BOLT
LOCATIONSGORILLATUFF®
SPLASH GUARDS

A superior mud flap begins with better materials. The nearly indestructible rubberized poly blend is made from 95% recycled materials all sourced from here in the U.S. This extruded splash guard has undergone rigorous testing for UV damage and is backed by Putco's extensive warranty program.

**SEE MUD SHIELD FOR MORE INFO
ABOUT HOW THEY WORK**

RECYCLED
MATERIALS

MUD SKINS™ SOLID APPLICATION GUIDE

NOTE: MUD FLAPS ARE SOLD AS SET OF 2

YEAR	MUD SKINS SOLID APPLICATION	BRUSHED STAINLESS	POLISHED STAINLESS	CARBON BLACK HDPE
2019-2022+	Chevrolet Silverado LD / GMC Sierra LD - (Fits Front) - Set of 2	78405	78305	78505
2019-2022+	Chevrolet Silverado LD / GMC Sierra LD - (Fits Rear) - Set of 2	78401	78301	78501
2014-2018	Chevrolet Silverado LD / GMC Sierra LD - (Fits Front) - Set of 2	78406	78306	78506
2014-2018	Chevrolet Silverado LD / GMC Sierra LD - (Fits Rear) - Set of 2	78402	78302	78502
2020-2022+	Chevrolet Silverado HD / GMC Sierra HD - (Fits Front) - Set of 2	78420	78320	78520
2020-2022+	Chevrolet Silverado HD / GMC Sierra HD - (Fits Rear) - Set of 2	78421	78321	78521
2020-2022+	Chevrolet Silverado HD Dually / GMC Sierra HD Dually - (Fits Rear) - Set of 2	78425	78325	78525
2015-2019	Chevrolet Silverado HD / GMC Sierra HD - (Fits Front) - Set of 2	78440	78340	78540
2015-2019	Chevrolet Silverado HD / GMC Sierra HD - (Fits Rear) - Set of 2	78441	78341	78541
2015-2022+	Ford F-150 - (Fits Front) - Set of 2	78410	78310	78510
2015-2022+	Ford F-150 - (Fits Rear) - Set of 2	78411	78311	78511
2017-2022+	Ford Super Duty - (Fits Front) - Set of 2	78430	78330	78530
2017-2022+	Ford Super Duty - (Fits Rear) - Set of 2	78431	78331	78531
2019-2022+	Ram 1500 - (Fits Front) - Set of 2	78407	78307	78507
2019-2022+	Ram 1500 - (Fits Rear) - Set of 2	78403	78303	78503
2010-2020	Ram 1500 - (Fits Front) - Set of 2 (Fits "Classic" body)	78408	78308	78508
2010-2020	Ram 1500 - (Fits Rear) - Set of 2 (Fits "Classic" body)	78404	78304	78504
2010-2022+	Ram HD - (Fits Front) - Set of 2 (Fits Classic and New body)	78460	78360	78560
2010-2022+	Ram HD - (Fits Rear) - Set of 2 (Fits Classic and New body)	78461	78361	78561
2019-2022+	Ram HD Dually - (Fits Rear) - Set of 2	78445	78345	78545
2016-2022+	Nissan Titan / Titan XD - (Fits Rear) - Set of 2	78485	78385	78585
2007-2022+	Toyota Tundra - (Fits Rear) - Set of 2	78495	78395	78595

PUTCO®

MUD SKINS™

FEATURING:



FEATURES

- Set consists of 2 premium mud flaps
- Laser cut for precision fit
- Riveted Construction
- Offset design allows for tire clearance
- Flexible material for better debris protection
- Available in polished stainless, brushed stainless and carbon black HDPE finishes
- Features new Hex Shield™ pattern
- 1 year warranty on material defects & failure, Putco's NeveRust™ Limited lifetime warranty

HEX PROTECTS.

PUTCO's New Hex Shield™ Series Mud Skins™ are custom-fit and deliver protection from rocks, mud, snow buildup and other debris your truck kicks up. Mud Skins™ featuring new Hex Shield™ design install in minutes. Be sure to protect and stylize your vehicle with the Hex Shield™ Series Mud Skins™. Available in polished stainless, brushed stainless, or carbon black high-density polyethylene finishes.

MOUNTING BRACKET WITH HEX-SHIELD™ PATTERN

The Mounting Bracket features Putco's new HEX SHIELD™ pattern that not only serves as a stylish accent to your vehicle's look but provides a strong mounting surface where the pattern becomes a versatile connection area for attaching to your vehicle. This makes installation quick because it can be easily attached no matter the location of your vehicle's mounting points.

BOLTED STRUCTURE

All components are fastened securely with bolts that ensures that your mud flaps will not fall apart when enduring road debris.

ANTI-SAIL WITH HEX-SHIELD™ PATTERN

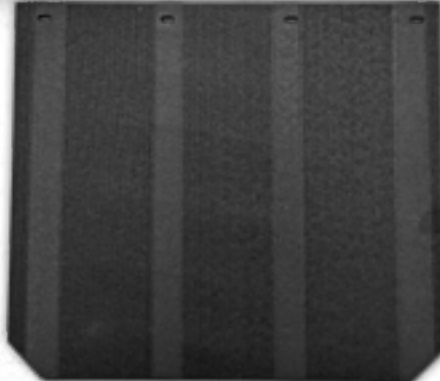
The Anti-Sail provides extra weight to keep the GorillaTuff™ Splash Guard in place while traveling down road. The added pressure from wind can cause lift, which can create a larger gap between the road surface and the bottom edge of the rubber. This additional piece adds an accent point with a critical function. By reducing the gap, Mud Skins Hex Shield does a better job protecting the items being towed from damaging road debris.

SETBACK DESIGN

Mud Skins utilize a hefty 18 gauge stainless steel mounting bracket that is offset to position the Gorillatuff® Splash Guards back to allow more room for larger tires while still providing the protection and clearance that you need. Mud Skins will not interfere with your preference for big tires and dirt roads.



GORILLATUFF SPLASHGUARDS™



GORILLATUFF® SPLASH GUARDS

A superior mud flap begins with better materials. The nearly indestructible rubberized poly blend is made from 95% recycled materials all sourced from here in the U.S. This extruded splash guard has undergone rigorous testing for UV damage and is backed by Putco's extensive warranty program.

SEE MUD SHIELD FOR MORE INFO ABOUT HOW THEY WORK

AVAILABLE SKIN OPTIONS



POLISHED STAINLESS STEEL

Putco's proprietary stainless steel features a super 8 mirror finish that delivers the shiniest and most reflective surface and a durable longlasting build that is highly resistant to corrosion.



CARBON BLACK HIGH-DENSITY POLYETHYLENE

This finish has a light textured matte black look that is CNC'd High-density polyethylene. This material is corrosion resistant, has a temperature range of -60C to 180F, will not crack or fade under UV.



BRUSHED STAINLESS STEEL

This option is made from a high Molybdenum 304 stainless steel that has a brushed grain metallic sheen to not only protect your vehicle but give your vehicle a modern industrial look.

FORD APPLICATIONS

FORD SUPER DUTY DRW



BRUSHED STAINLESS
Rear: 78135 Front: 78130



POLISHED STAINLESS
Rear: 78035 Front: 78030



CARBON BLACK HIGH-DENSITY POLYETHYLENE
Rear: 78235 Front: 78230

FORD APPLICATIONS

FORD F150



BRUSHED STAINLESS
78110



POLISHED STAINLESS
78010



CARBON BLACK
HIGH-DENSITY POLYETHYLENE
78210

FORD SUPER DUTY SRW



BRUSHED STAINLESS
78130



POLISHED STAINLESS
78030



CARBON BLACK
HIGH-DENSITY POLYETHYLENE
78230

DODGE APPLICATIONS

DODGE RAM LD 1500



DODGE RAM HD SRW



DODGE APPLICATIONS

DODGE RAM HD DRW



BRUSHED STAINLESS
Rear: 78145 Front: 78140



POLISHED STAINLESS
Rear: 78045 Front: 78040



**CARBON BLACK
HIGH-DENSITY POLYETHYLENE**
Rear: 78245 Front: 78240

CHEVROLET APPLICATIONS

CHEVY SILVERADO



BRUSHED STAINLESS
78100



POLISHED STAINLESS
78000



**CARBON BLACK
HIGH-DENSITY POLYETHYLENE**
78200

GMC APPLICATIONS

GMC SIERRA



APPLICATION GUIDE

NOTE: MUD FLAPS ARE SOLD AS SET OF 2

YEAR	APPLICATION	BRUSHED STAINLESS	POLISHED STAINLESS	CARBON BLACK HDPE
2020-2022+	Chevrolet Silverado HD / GMC Sierra HD - (Fits Front or Rear) - Set of 2 (Does not fit rear for Dually models).	78120	78020	78220
2015-2019	Chevrolet Silverado HD / GMC Sierra HD - (Fits Front or Rear) - Set of 2 (Does not fit rear for Dually models).	78140	78040	78240
2015-2019	Chevrolet Silverado HD Dually / GMC Sierra HD Dually - (Fits Front) - Set of 2	78170	78070	78270
2015-2019	Chevrolet Silverado HD Dually / GMC Sierra HD Dually - (Fits Rear) - Set of 2	78175	78075	78275
2020-2022+	Chevrolet Silverado HD Dually / GMC Sierra HD Dually - (Fits Rear) - Set of 2	78125	78025	78225
2014-2022+	Chevrolet Silverado LD / GMC Sierra LD - (Fits Front or Rear) - Set of 2	78100	78000	78200
2015-2022+	Ford F-150 - (Fits Front or Rear) - Set of 2	78110	78010	78210
2011-2016	Ford Super Duty - (Fits Front or Rear) - Set of 2 (Does not fit rear for Dually models).	78150	78050	78250
2011-2016	Ford Super Duty Dually - (Fits Rear) - Set of 2	78155	78055	78255
2017-2022+	Ford Super Duty - (Fits Front or Rear) - Set of 2 (Does not fit rear for Dually models).	78130	78030	78230
2017-2022+	Ford Super Duty Dually - (Fits Rear) - Set of 2	78135	78035	78235
2009-2022+	Ram 1500 - (Fits Front or Rear) - Set of 2 (Fits Classic and New body)	78100	78000	78200
2010-2022+	Ram HD - (Fits Front or Rear) - Set of 2 (Fits Classic and New body)	78140	78040	78240
2019-2022+	Ram HD - (Fits Front or Rear) - Set of 2 (Does not fit rear for Dually models).	78140	78040	78240
2019-2022+	Ram HD Dually - (Fits Rear) - Set of 2	78145	78045	78245
2010-2018	Ram HD Dually - (Fits Front) - Set of 2	78160	78060	78260
2010-2018	Ram HD Dually - (Fits Rear) - Set of 2	78165	78065	78265