



BLADETM

LED TAILGATE LIGHT BAR

BE SAFE • BE SEEN

PUTCO

PUTCO®

BRIGHTNESS

The goal of a tailgate light bar is to increase your vehicles' visibility on the road, so a high lumen output is a critical element of Putco's Blade tailgate light bar. Our product achieves a 3000 lumen output through the use of a dense arrangement of over 2000 chip-on-board LED's. Many of the competitors' products utilize SMD LEDs which has its own benefits and drawbacks. Using COB LED's allows us to pack more diodes into a tighter space creating the appearance of singular line of intense light. Ultimately when choosing your light bar, visibility on the road should be one of your highest priorities. This is the feature that prevents collisions and gets you and your family home safe.

PUTCO BLADE®



OUR COMPETITORS

EXAMPLE 1



Fewer LED's not only limit the overall lumen output but create visible breaks in the line of light.

EXAMPLE 2



The method of mounting these LEDs is less precise which creates a staggered and uneven spread of LED chips upon close examination.

EXAMPLE 3



Overall, the lower the LED diode count, the less impact the light bar will have on the road.

INCREASE VISIBILITY WHEN IT COUNTS



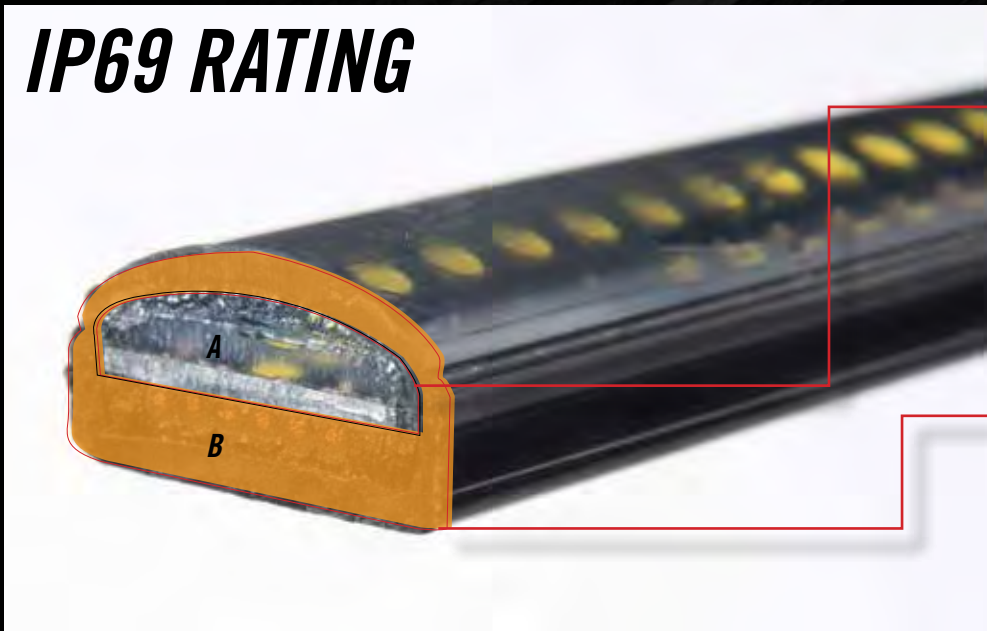
The powerful Lumen output provides additional lighting when the vehicle is in reverse. The cool 6000K reverse light color offers improved visibility not only for other's on the road but for the driver while backing up at night.

WATER PROOF

This is where the Blade product line stands apart from the rest of the light bars on the market. Putco has gone through great lengths of testing and development to achieve a higher rating than any other tailgate light bar. To better understand what makes the blade so durable we need to break down the rating classification system. You may be searching on-line comparing these products on your own and find ratings like IP57, or IP68, etc... but what does this actually mean.

IP simply stands for Ingress Protection, the following two numbers represent what level of ingress protection provided from solids and liquids respectively. So looking at the Blade we see a rating of IP69, this is the highest possible rating. The 6 denotes this product is 100% dust tight, that means zero dust ingress after 8 hours of testing. The second number, 9 denotes this product is not only 100% free from moisture ingress after 30 minutes of pressurized submersion but can withstand high temp. pressurized moisture as well.

IP69 RATING



A

- Patented 2 part resin conceals, protects, and insulates the circuitry. The custom resin is injected to the patented extruded housing in a vacuum removing all air and moisture for a 100% waterproof product.

B

- Tinted polycarbonate extruded housing provides complete encapsulation. This creates a water tight chamber to hold the 2 part resin and protect the internal components from the rigors of use.

LET'S TAKE A LOOK AT WHAT THE COMPETITION HAS TO OFFER:

While no light bar is impenetrable, there are certainly things to look for when identifying a quality part. The light bars outlined below contain elements of a strong design, but lack the crucial combinations of an exterior shell that can prevent damages on contact and an interior defensive layer to conceal and protect delicate circuitry and diodes. Overall the competitors light bars are bigger and bulkier, contain inconsistent chip arrangements, and housing material irregularities.

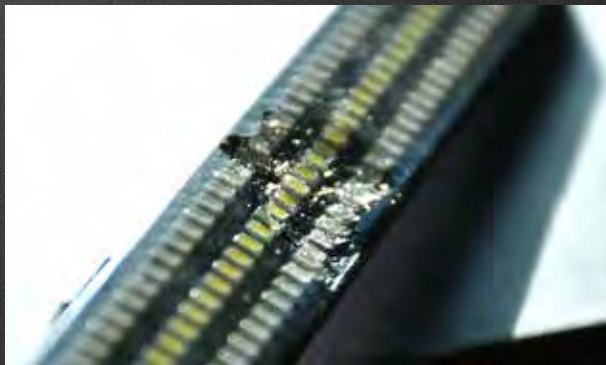
OUR COMPETITORS

EXAMPLE 1



The material protecting the delicate circuitry and diodes from outside elements is only effective when intact. The soft resin material is easily scraped exposing the diodes to moisture and dust.

EXAMPLE 2



Again the product used to protect the circuitry is exposed to the elements and easily damaged. Once the fragile board and diodes are exposed to moisture it is only a matter of time before catastrophic failure.

EXAMPLE 3



While this part contains a tough outer shell, there is no resin material encasing the circuitry or diodes. Once this seal is compromised the sensitive components of the light bar will be exposed to moisture guaranteeing failure.

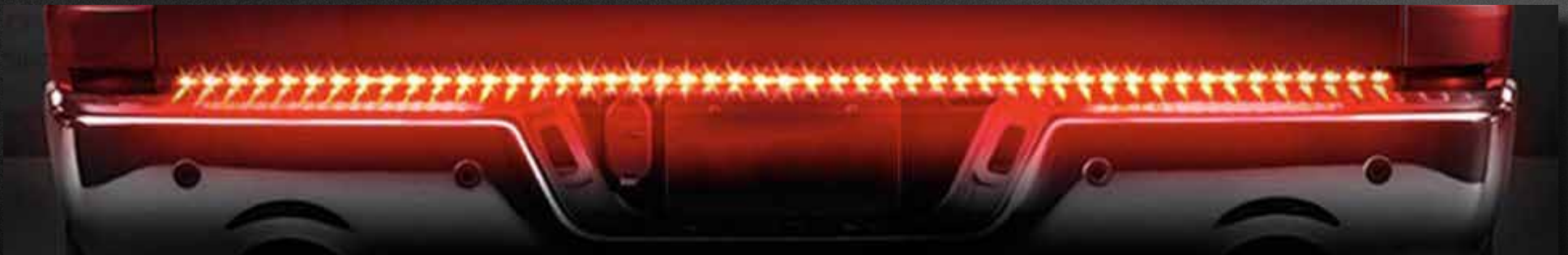
QUALITY

The overall of quality of light is yet another category in which the Blade Tailgate Light Bar stands apart. Many of the competitors lightbars LED spacing is so significant there are visible breaks in the light pattern across the tailgate creating a “Christmas Light” effect. The Blade Tailgate Lightbar utilizes a Chip On Board design allowing a dense high diode count which in turn creates a nearly seamless bar of light along the entire length of the tailgate.

BLADE



COMPETITOR



COMPATIBILITY

Part of what makes the Putco tailgate light bar an industry leader is the ease of installation. While all light bars can be wired directly to the tail lights, the Blade® Tailgate Light Bar paired with the Quick Connect Harness (currently sold separately) can be installed in minutes utilizing the trailer harness. This simple plug & play solution allows the consumer to easily install the light bar without cutting or splicing wires making this an approachable installation project for novice and experts alike.

529004



UNIVERSAL APPLICATION

529004



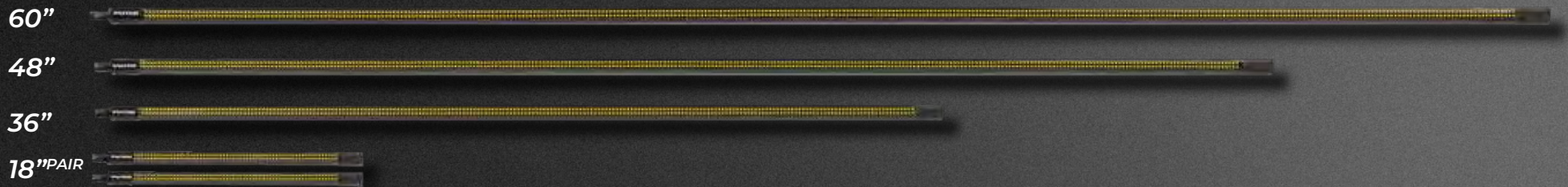
FOR 2019+ SILVERADO SIERRA HD

QUICK CONNECT HARNESS APPLICATIONS

The quick connect harness allows you to keep your factory electrical wiring intact while keeping your trailer connections available for towing without have to disconnect your tailgate light bar. Putco offers a plug & play solution for most vehicles and is currently working to provide solutions for all of the newest models.

MULTIPLE SIZES

The Putco light bar offers a lot of versatility in this category. There are 5 different lengths available to accommodate HD and LD trucks, and smaller split light bars that work around tailgate obstacles like spare tire access ports or the tire itself on Jeep JK/JL's. The different lengths provide a perfect fitment on nearly any make and model. Putco offers the slimmest low-profile option on the market at .75" wide by .375" tall. This makes the Blade an ideal option for any vehicle because it will not inhibit tailgate functionality and become nearly invisible once installed in the recessed space on trucks.



DUAL PAIR OPTION

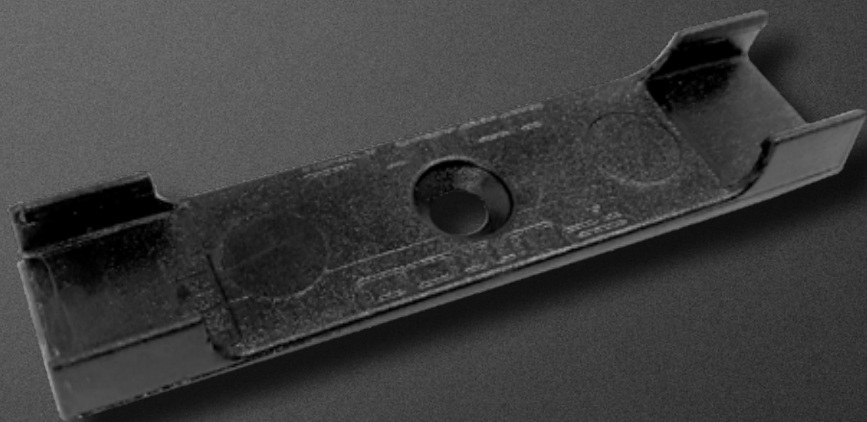


Pictured above is the dual 18" option created for vehicles with obstacles in the center of the bumper. This blade is the perfect option for Jeeps and other vehicles with a center mounted tire.

ATTACHMENT

The attention to detail makes the Putco Blade® a truly innovative product. One key element of the design that many competitors have overlooked is seemingly simple. The method of attachment. While the Putco Blade® utilizes 3M™ Automotive Tape as a primary method of connection the patented clip mechanism allows for the light bar to be detached to access the port for raising and lowering of the spare tire. A road side tire change is enough to deal with. The last thing the consumer should be concerned with is how to remove and then reinstall a tailgate light bar on the side of a busy roadway.

PATENTED CLIPS



Each Blade® comes with a set of four. The patented clip system includes a piloted hole for an alternative permanent bolt/screw on attachment if preferred over adhesion.

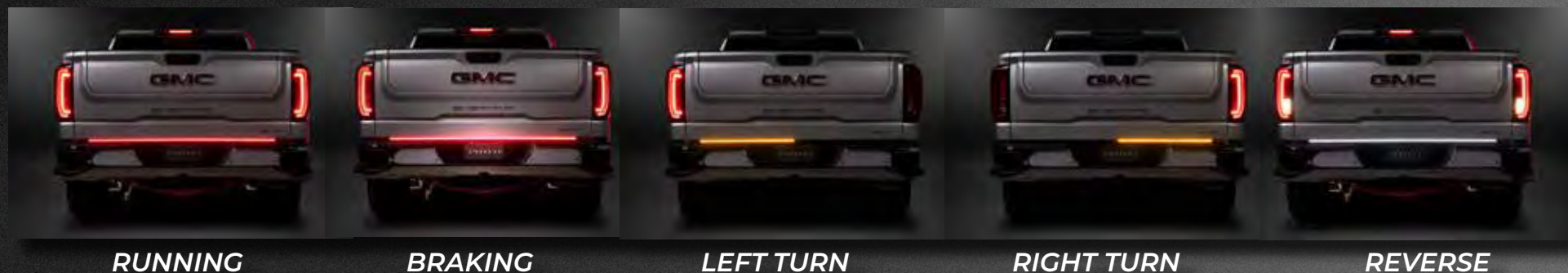
KIT CONTENTS



Each kit constant 4 sets of clips and strips of 3M™ Automotive tape as well as set of scotch locks for direct wire methods, and a promoter pack to prep surfaces for improved adhesion.

COLOR OPTIONS

BLADE® (with amber turn signals)



Putco offers two different Blade® color options. The original Putco Blade® has red brake, red running, amber turn signals, amber hazards, and white reverse functions. The powerful lumen output and bold color with the Blade® tailgate light bar is a result of chip on board arrangement using color specific diodes to project a much richer 1700k amber, 6700k cool white, and a super powerful 1000k red. The impact is far more significant with the dedicated color LEDs which commands visual attention.

| Size | Description | Part Number |
|--------------|---|-------------|
| 60 Inch | Blade LED Tailgate Light Bar - With Amber Signals | 92009-60 |
| 48 Inch | Blade LED Tailgate Light Bar - With Amber Signals | 92009-48 |
| 36 Inch | Blade LED Tailgate Light Bar - With Amber Signals | 92009-36 |
| 18 Inch Pair | Blade LED Tailgate Light Bar - With Amber Signals | 92009-18 |

COLOR OPTIONS

RED BLADE® *(red turn signals)*



RUNNING

BRAKING

LEFT TURN

RIGHT TURN

REVERSE

The latest option, Red Blade® functions with red brake, red running, red hazards, red turn signals and white reverse. This blade was developed to match trucks that utilize red turn signal functions. This iteration of the Blade tailgate light bar contains of all the same great features as the original light bar minus amber turn signals.

| Size | Description | Part Number |
|--------------|---|-------------|
| 60 Inch | Blade LED Tailgate Light Bar - With Red Signals | 92010-60 |
| 48 Inch | Blade LED Tailgate Light Bar - With Red Signals | 92010-48 |
| 36 Inch | Blade LED Tailgate Light Bar - With Red Signals | 92010-36 |
| 18 Inch Pair | Blade LED Tailgate Light Bar - With Red Signals | 92010-18 |

