



TEC SKIN™

Installation Instructions

For Jeep Gladiator



For proper installation and best possible fit, please read all instructions BEFORE you begin.

Important Information

BEFORE you begin the installation process:

- Carefully read all instructions.
- Verify that all parts are included by checking the contents of your kit.

If any parts are missing or appear damaged, please contact our customer service team for assistance.

Customer Service

For support, please contact the Putco team, available Monday to Friday 8:30 AM to 5PM (Central Time).

1 800 247 3974

support@putco.com

Supported Vehicles

MAKE	MODEL	YEAR
JEEP	GLADIATOR (STANDARD BED)	2020-2025

Recommended Tools + Supplies

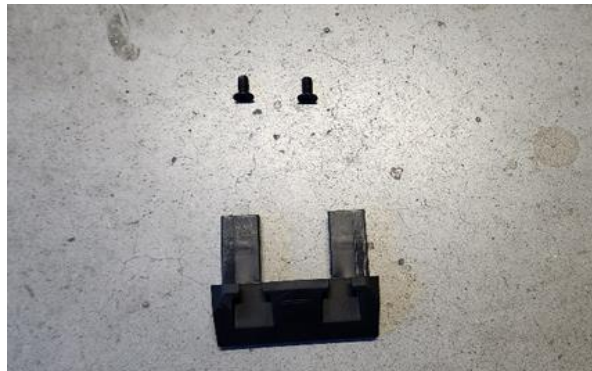
3/16" HEX KEY	1/2" WRENCH OR SOCKET AND DRIVER
11/32" DRILL BIT	DRILL
2.5 MM HEX KEY	

Kit Contents

2 TEC SKIN EXTRUSION WITH END CAPS	MOUNTING HARDWARE
------------------------------------	-------------------

Step by Step Installation

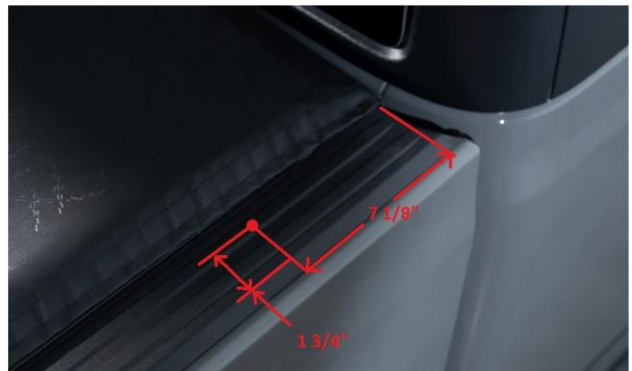
1. Retrieve the four extrusion end caps and eight black M4 screws from your kit, along with the two Tec Skin aluminum extrusions.



2. Push the end caps into the ends of the Tec Skin extrusions so that the threaded holes in the end caps line up with the counter sunk holes in the extrusion.
3. Install the M4 screws into the extrusions and end caps using a 2.5mm hex key.



4. Measure and mark the hole location at the front of both bed caps as shown.



5. Measure and mark the hole locations on the rear of both bed caps as shown.



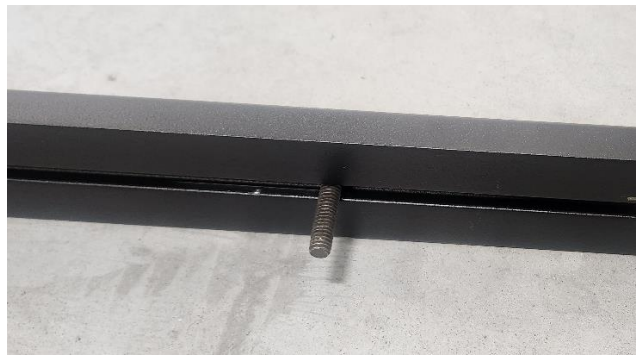
6. Drill a hole with a 11/32" drill bit in the four marked hole locations.



7. Identify which end of the Tec Skin extrusion is the rear, it will be marked with a white etch in front of the rear mounting slot, as shown. This end will go towards the tailgate (rear) of the vehicle.



8. Lay the Tec Skin extrusions on their sides.
9. Retrieve the 5/16" bolts included in your kit, install two on each extrusion by sliding the head of the bolts into the single channels on the bottom side.



10. Ensure the bed caps are clean and free from dirt or debris.
11. Lay the extrusions down on the bed caps and push the 5/16" bolts into the holes drilled in step 6. Ensure the end marked front is positioned towards the cab.



12. Retrieve the 5/16" washers and nuts from your kit, install the washer and thread the nut onto the 5/16" bolt on the underside of the vehicles bed cap. Do not fully tighten yet.



13. Align the front end cap on the Tec Skin extrusion so that it is flush with the bed cap end, as shown. Position the extrusion in the desired final position.



14. Tighten the bolts and nuts on all four mounting points using a 3/16" hex key and 1/2" socket or wrench. Ensure the extrusions are secure before driving the vehicle.



Congratulations on completing the installation of your Putco product!
For information regarding your warranty, please visit www.putco.com/warranty.

Issues? Please Contact Our Technical Support Team: 1 800 247 3974



WARNING: Final Inspection required. Inspect product was properly Installed and all installation instructions were followed.



For additional information, please visit our website at www.putco.com!