



# TEC SKIN™

## Installation Instructions

### For Ford Full-Size Trucks



For proper installation and best possible fit, please read all instructions BEFORE you begin.

### Important Information

BEFORE you begin the installation process:

- Carefully read all instructions.
- Verify that all parts are included by checking the contents of your kit.

If any parts are missing or appear damaged, please contact our customer service team for assistance.

### Customer Service

For support, please contact the Putco team, available Monday to Friday 8:30 AM to 5PM (Central Time).

1 800 247 3974

[support@putco.com](mailto:support@putco.com)

### Supported Vehicles

MAKE	MODEL	YEAR
FORD	F-150	2015-2025
FORD	F-150 (8' BED) / F-250 / F-350	2017-2025

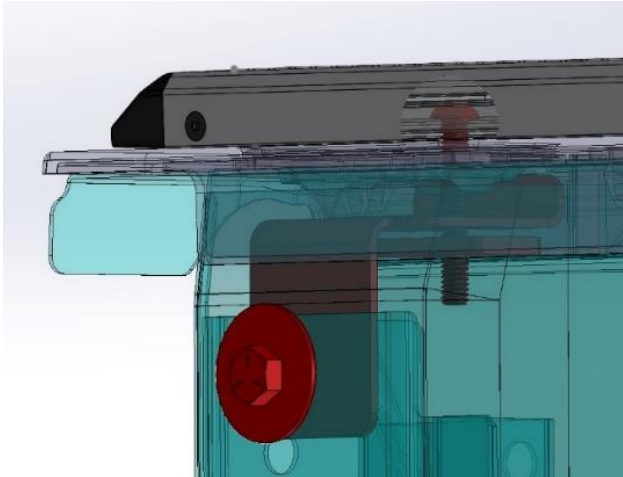
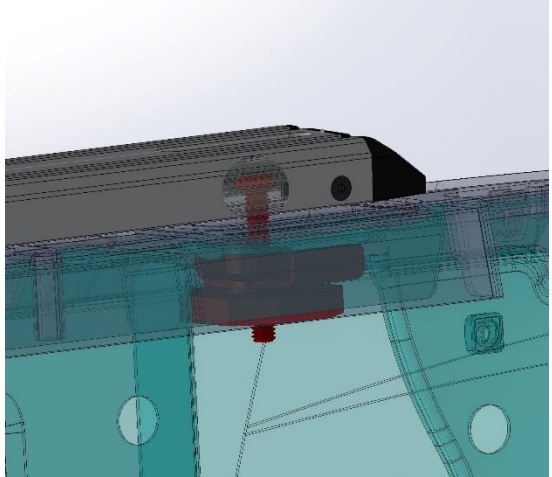
## Recommended Tools + Supplies

3/16" HEX KEY	9/16" SOCKET AND DRIVER
RUBBER BANDS OR TAPE	KNIFE OR RAZOR BLADE
2.5MM HEX KEY	

## Kit Contents

2 TEC SKIN EXTRUSIONS WITH END CAPS	4 MOUNTING BRACKETS (6 FOR 8' BEDS)	HARDWARE KIT
-------------------------------------	-------------------------------------	--------------

## Stake Pocket Assemblies

Front	Rear & Center (8' Beds)
	

## Step by Step Installation

1. Retrieve the four extrusion end caps and eight black M4 screws from your kit, along with the two Tec Skin aluminum extrusions.



2. Push the endcap into the ends of the Tec Skin extrusions so that the threaded holes in the end cap line up with the counter sunk holes in the extrusion.
3. Install the M4 screws into the extrusions and end caps using a 2.5mm hex key.



4. Use a knife or razor blade to cut open the front and rear stake pockets on your vehicle's bed cap, if not already exposed.

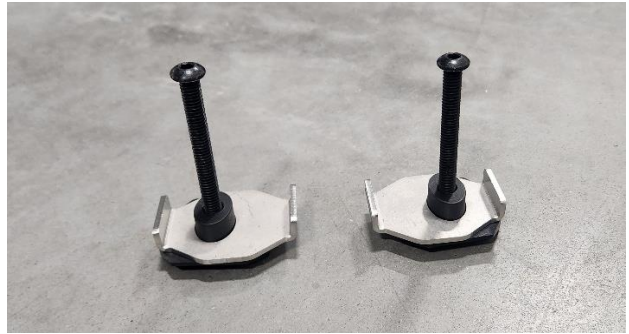
**TIP:** 8-foot beds will have a center stake pocket that should be exposed as well.



5. If plastic inserts are covering the holes in the truck bed sidewall at the front stake pocket brackets, remove them.



6. Unbox the hardware kit and identify the four (six for 8' beds) plastic bracket plates and 5/16" x 3.25" long bolts.
7. Join the plastic bracket plates and the rear stake pocket brackets and thread the 5/16" bolts into the plastic bracket plates, as shown.



8. Join the remaining two plastic bracket plates to the front stake pocket brackets. Use a rubber band or tape to hold them together.
9. Take note of which bracket is intended to be installed on the driver's side front stake pocket, and which is intended to be installed on the passenger's side front stake pocket.



10. Starting on the passenger's side of the vehicle, carefully lower the front driver's side stake pocket bracket into the stake pocket, as shown.



11. Once the bracket is lowered into the hole, grab one of the remaining 5/16" bolts and carefully start threading it into the plastic bracket plate.





12. Now use the 5/16" bolt to hold and position the front stake pocket bracket so that the J-nut threads are aligned with the hole in the sidewall of the truck bed, as shown.



13. Locate the 3/8" bolts and washers in the provided hardware kit and install them into the J-nut on the front stake pocket bracket. Use a 9/16" socket and drive to fully tighten.



14. Lay the Tec Skin extrusions on their sides.
15. Identify which end of the extrusion is the rear, it will be marked with a white etch in front of the rear mounting slot, as shown. This end will go towards the tailgate (rear) of the vehicle.



16. On the rear end of the Tec Skin extrusion, push the head of the 5/16" bolts with the rear stake pocket brackets and plastic bracket plates installed into the single channel on the bottom of the extrusion.

TIP: 8-foot beds will need two bracket assemblies installed on each extrusion, one for the rear stake pocket, and one for the center.



17. Ensure the bed caps are clean and free from dirt and debris.
18. Carefully pick up the Tec Skin extrusion and guide the rear stake pocket bracket into the rear stake pocket of the vehicle as shown. For 8-foot beds, guide the second bracket into the center stake pocket.
19. Once the rear stake pocket brackets are in, lay the Tec Skin extrusion down on the bed cap and move back to the front stake pocket.



20. Carefully remove the 5/16" bolt from the front stake pocket bracket.
21. Slide the head of the bolt into the single channel on the bottom of the extrusion and realign it with the threaded hole in the plastic bracket plate.



22. Carefully thread the 5/16" bolt back into the threaded hole in the plastic bracket plate.

23. Use a 3/16" hex key to thread the top bolt down into the stake pocket, do not fully tighten yet.

**TIP:** Apply upward pressure on the Tec Skin extrusion while tightening to prevent the plastic bracket plate from spinning.



24. Move back to the rear stake pocket, position the bracket in the hole so that the flanged edges of the bracket lock into the edges of the stake pocket, as shown. Repeat on center stake pocket for 8-foot beds.



25. Apply upward pressure on the Tec Skin extrusion while tightening the top bolt with a 3/16" hex key to prevent the stake pocket bracket from spinning. Do not fully tighten yet. Repeat on center stake pocket for 8-foot beds.



26. Move back to the front of the Tec Skin extrusion. Align the end of the front endcap with the edge of the bed cap as shown

27. Once the extrusion is aligned in the desired final position, finish tightening the top bolt on all stake pocket brackets with a 3/16" hex key.



28. Repeat steps 10-27 on the driver's side of the vehicle.
29. Check all fasteners are tight and the Tec Skin extrusions are securely attached to the bed caps before driving the vehicle.



Congratulations on completing the installation of your Putco product!  
For information regarding your warranty, please visit [www.putco.com/warranty](http://www.putco.com/warranty).

**Issues? Please Contact Our Technical Support Team: 1 800 247 3974**



**WARNING:** Final Inspection required. Inspect product was properly Installed and all installation instructions were followed.



For additional information, please visit our website at [www.putco.com](http://www.putco.com)!