



For proper installation and best possible fit, please read all instructions BEFORE you begin.



## Important Information

BEFORE you begin the installation process:

- Carefully read all instructions.
- Verify that all parts are included by checking the contents of your kit.

If any parts are missing or appear damaged, please contact our customer service team for assistance.

## Customer Service

For support, please contact the Putco team, available Monday to Friday 8:30 AM to 5PM (Central Time).

1 800 247 3974

[support@putco.com](mailto:support@putco.com)



## Supported Vehicles

MAKE	MODEL	YEAR
Ford	F-150	2015-2025

## Recommended Tools + Supplies

- 10mm wrench	-Diagonal pliers	- T20 Torx Driver
-Electrical tape	-Trim removal tool	-IPA and cloth

## Kit Contents

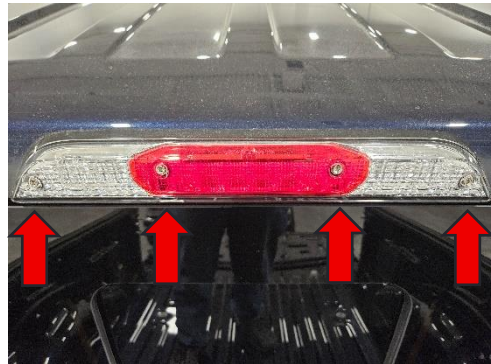
Bracket with Beacons	Wire Harness	Foam Gasket
Zip-Ties		

## Installation Time

30-60 minutes

# Installation

1. Remove items from the packaging. Check to see if all parts from above table of contents are included.
2. With a T20 Torx driver, remove and keep the four screws holding in the 3rd brake light.



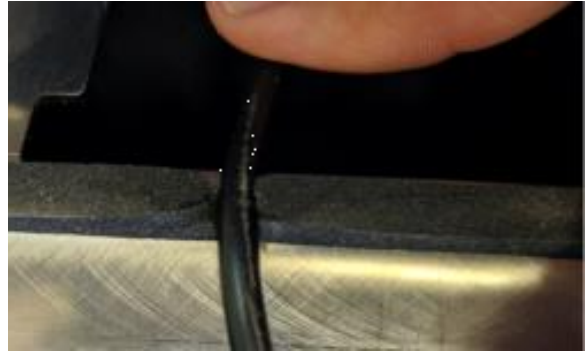
3. Remove the 3rd brake light by pulling outwards from the bottom of the light and unplugging the 3rd brake light from its harness.



4. Install the gasket onto the side of the bracket that will be facing into the truck if not already installed.



5. Trim a small section of the top of the gasket to allow the wires to pass through. Push the wires down into the cab. You may need to peel back some of the headliner in the cab to help feed the wires through.



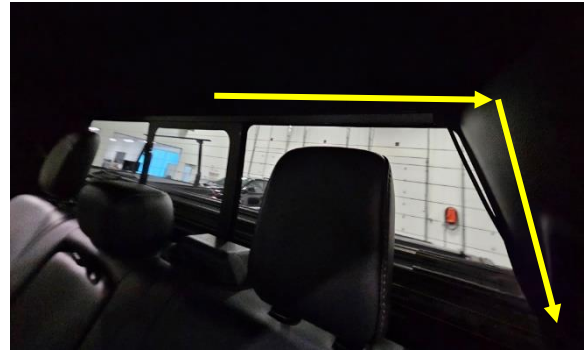
6. Peel off the 3M tape backing on the front of the bracket, feed the wires through the bracket and reconnect to the 3<sup>rd</sup> brake light. Clean the paint with IPA and microfiber cloth to help promote better adhesion. Make sure it is centered before applying pressure above the 3M tape pads. 3M will fully adhere in 48 hours.



7. Now reconnect the third brake light using the T20 Torx driver. Start all bolts before you tighten one so you make sure that the holes line up.



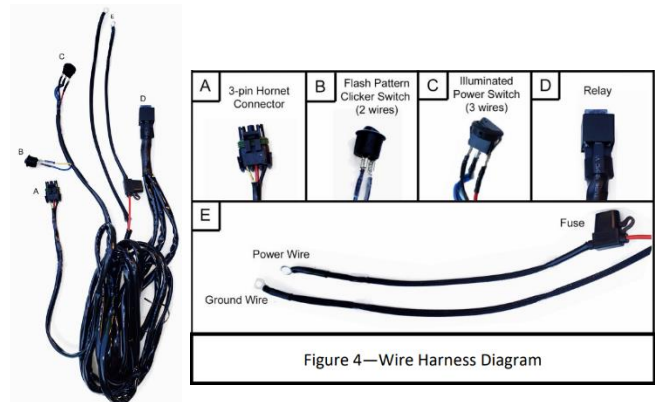
8. Route the wires inside the headliner over to the driver side and down to the floor.



9. Route the wires under the door trim molding and forward towards the drivers footwell. The trim can be partially popped up using a trim removal tool to help push the wires underneath.

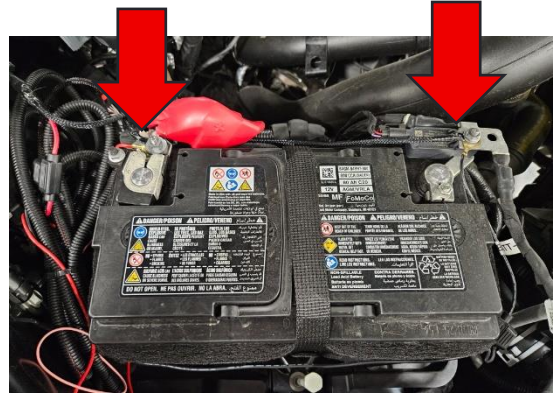


10. Now you must install the wire harness to control the two beacons. See the picture to the right for wire harness component definitions. If the beacons stop working for any reason check to make sure the 10A inline fuse is not blown.





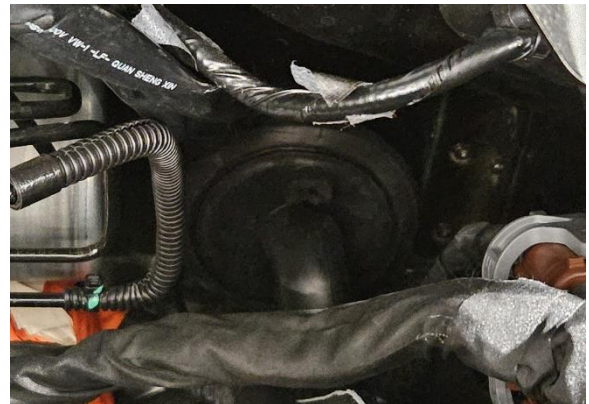
11. Start by connecting the red ring terminal to the positive battery post and the black ring terminal to the negative battery post using a 10mm wrench.



12. Route the harness over the engine bay and down towards the firewall rubber boot pass through. You can drill two-  $\frac{1}{4}$ " holes in the soft plastic and use zip ties to secure the harness. Secure the harness every 6-8" so it does not drape onto the engine.



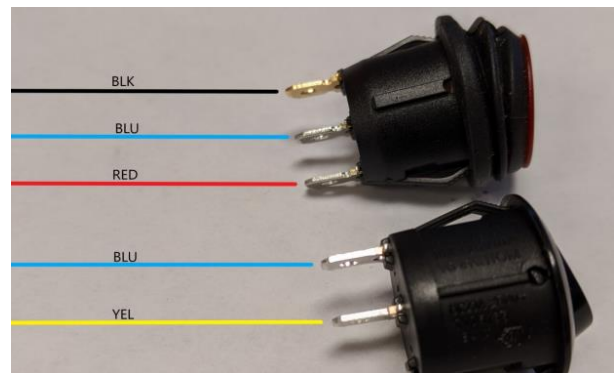
13. Cut a hole in the rubber boot to make a hole to pass through the harness. Use a wire puller or extra long screw driver, pull the 3-pin connector and switches through the firewall.



14. The harness has two switches. The rocker switch will turn the beacons on and off, the momentary clicker switch will change the beacon patterns. These can be mounted to the plastic by drilling a 20.5mm hole. If you do not want to drill into your dash, they can be secured behind the OBD-II connector using zip ties.



15. If you disconnect your switches to mount them, this is how they need to be reconnected to function properly.



16. Route the remaining wire harness with the 3-pin connector at the end under the door trim molding and towards the back of the truck. Use a trim removal tool to carefully pop up the plastic and push the wire harness underneath.



17. Connect the wire harness to the beacons. Hide the connector under the door trim plastic between the front and back doors.



Congratulations on completing the installation of your Putco product!  
For information regarding your warranty, please visit [www.putco.com/warranty](http://www.putco.com/warranty).

**Issues? Please Contact Our Technical Support Team: 1 800 247 3974**



**WARNING:** Final Inspection required. Inspect product was properly Installed and all installation instructions were followed.



For additional information, please visit our website at [www.putco.com](http://www.putco.com)!