

PUTCO®
ADVANCED LED LIGHTING & TRUCK ACCESSORIES

Installation Instructions

For Toyota Tacoma (MY 25+)



For proper installation and best possible fit, please read all instructions BEFORE you begin.

Important Information

BEFORE you begin the installation process:

- Carefully read all instructions.
- Verify that all parts are included by checking the contents of your kit.

If any parts are missing or appear damaged, please contact our customer service team for assistance.

Customer Service

For support, please contact the Putco team, available Monday to Friday 8:30 AM to 5PM (Central Time).

1 800 247 3974

support@putco.com

Supported Vehicles

MAKE	MODEL	YEAR
TOYOTA	TACOMA	2025+

Recommended Tools + Supplies

10MM SOCKET AND DRIVE	KNIFE OR SCISSORS
1/8 INCH HEX KEY	3/8 INCH WRENCH OR SOCKET
TRIM REMOVAL TOOL OR FLAT HEAD SCREWDRIVER	

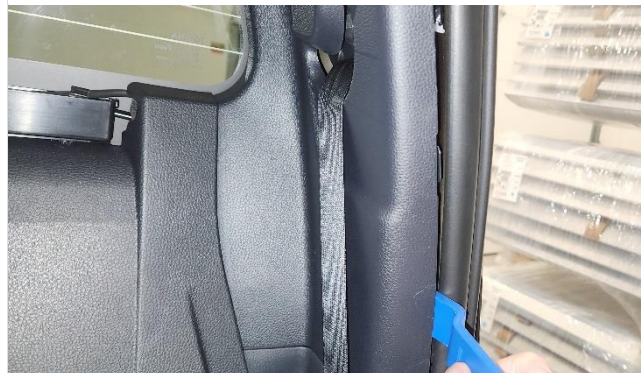
Kit Contents

3 RD BRAKE LIGHT BRACKET	MOUNTING HARDWARE	FOAM GASKET
--	----------------------	-------------

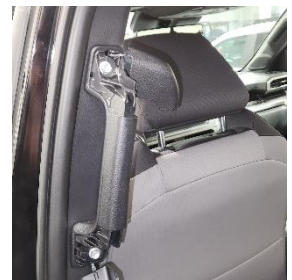
NOTE: This guide provides instructions solely for installing the 3rd brake light bracket. For wiring information related to your lighting accessory, please consult the instructions provided with the accessory or visit the product page at www.putco.com.

Step by Step Installation

1. Starting on the Driver's side of the vehicle, carefully remove the C-pillar trim of the vehicle using a trim removal tool or a flathead screwdriver.



2. Pull the covers off the top and bottom of the rear seat assist handles. You can grip and pull them off, or pry carefully using a trim removal tool or flat head screwdriver.
3. Use a 10mm socket to remove the top and bottom bolts and remove the handle



4. Use a trim removal tool to carefully remove the lower half of the trim on the B-pillar.



5. Use a trim removal tool or flathead screwdriver to pull the center of the two push-style trim clips out from the bottom of the upper B-pillar trim and remove them.



6. Pull the upper B-pillar trim away from the vehicle to detach it, there will be a spring clip in the top center.
7. Repeat steps 1-6 on the Passenger's side of the vehicle.



8. Use a trim removal tool or flat head screwdriver to remove the plastic covers on the two coat hooks in the headliner in the rear of the cabin.
9. Uninstall the coat hooks by disengaging the spring clip in the center that was exposed in the previous step.



10. Use a trim removal tool or flat head screwdriver to remove the speaker unit in the center of the headliner in the rear of the vehicle.



11. Disconnect the 2-pin connector by depressing the locking tab and pulling away from the speaker. Place the speaker unit in a safe location for later reinstallation.



12. Use a trim removal tool or flat head screwdriver to remove the rear ceiling light from the headliner.
13. Disconnect the wiring harness from the light unit, place the light unit in a safe location for later installation.



14. Carefully pull the rear headliner down away from the ceiling of the vehicle. To expose the metal bodywork and four flanged hex nuts.



15. Use a 10mm socket to remove the four flanged hex nuts from the rear of the cabin.



16. Exit the vehicle and step onto the truck bed. Gently pull the rear spoiler trim away from the vehicle to disengage the mounting clips.



17. Disconnect the wiring harness from the 3rd brake light, and set the rear spoiler trim in a safe scratch free location.



18. Retrieve the 3rd brake light bracket included in your kit, along with the associated mounting hardware and desired lighting accessory.
19. Using a 1/8 inch hex key and 3/8 inch wrench or socket install the light to the 3rd brake light bracket as shown.



20. Locate the foam gasket included in your kit. Peel off the backing and install onto the 3rd brake light bracket as shown to prevent water intrusion.



21. **(OPTIONAL)** If routing the wire harness into the cab, the corrugated loom can be cut at the entry point between the cabin body, and the rear spoiler trim. A slot in the foam gasket can also be cut to allow the wires to run through.



22. Install the bracket to the vehicle by sandwiching it between the cabin and the rear spoiler trim, ensuring the curvature of the bracket aligns with the curvature of the cabin, and that the center most bolts on the rear spoiler trim run through the slots on the 3rd brake light bracket. **Make sure to reconnect the 3rd brake light wiring harness.** A second person may be necessary to install and tighten the 10mm flanged nuts inside the cab while the bracket and spoiler are held in place outside the cab.



23. Reinstall all parts removed in the installation process in the reverse order. Ensure all electrical connections are restored, and that all parts are reinstalled and secure.
24. Test that all seatbelts and electrical parts are in working order.



Congratulations on completing the installation of your Putco product!

For information regarding your warranty, please visit www.putco.com/warranty.

Issues? Please Contact Our Technical Support Team: 1 800 247 3974



WARNING: Final Inspection required. Inspect product was properly Installed and all installation instructions were followed.



For additional information, please visit our website at www.putco.com!