

**2025+ Maverick Emblem Installation Instructions**

Congratulations on your purchase of a high quality PUTCO product. Should you need any application or technical assistance, or to obtain missing parts, feel free to call us at: 1-800-247-3974

Monday-Friday 8:00 a.m. - 5:00 p.m. (Central Standard Time)

Contact your PUTCO dealer for other quality accessories.

**Please read all instructions before installation and verify that all parts are included.**

**Tools Needed:**

- Flat head screwdriver
- Trim removal tool
- 1" hole saw
- 7mm socket/wrench
- 10mm socket/wrench
- T30 Torx bit/wrench
- Zip-ties

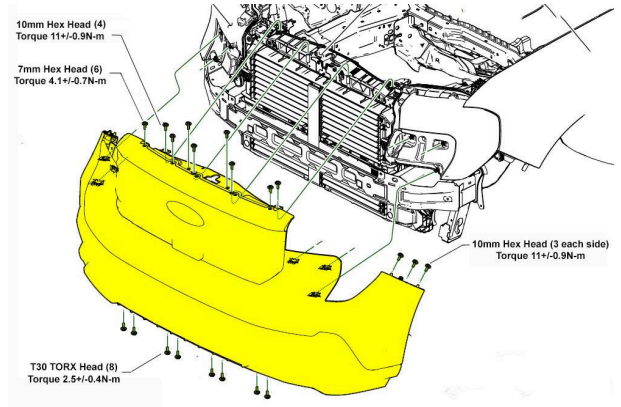


Figure 1

**Front Fascia removal:**

1. Open the hood and locate the five screws on top of the front fascia assembly. Use a 7mm socket or wrench to remove them. See Figures 1 and 2a.
2. Locate the additional four screws on top of the front fascia assembly. Use a 10mm socket or wrench to remove them. See Figures 1 and 2b.
3. Move to the bottom of the grille, identify and remove the eight screws and washers. Use a T30 Torx bit or wrench to remove them. See Figures 1 and 3.

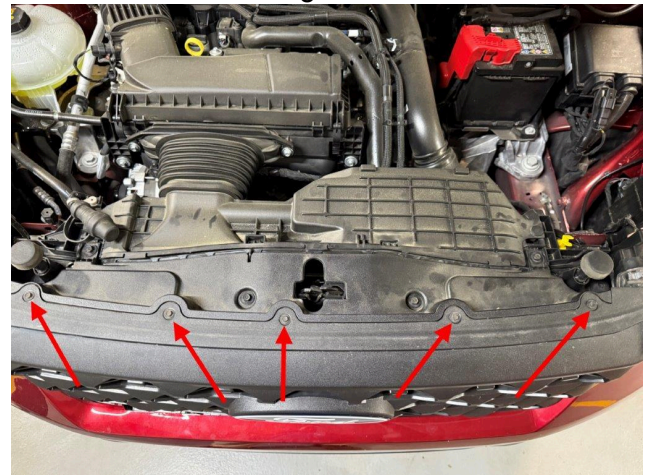


Figure 2a

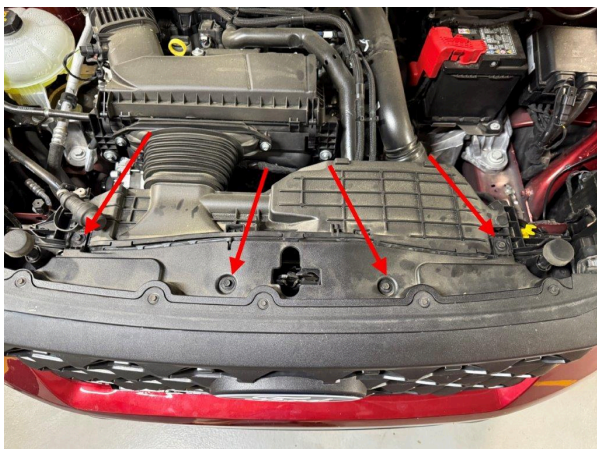


Figure 2b



Figure 3.

4. Move to the passenger front wheel well liner, identify and uninstall the six screws holding the splash guard using a 7mm socket or wrench. See Figure 4.
5. Remove the one final push pin holding the splash guard in place and the first four push pins holding the wheel liner in place. See Figure 4.
6. Gently tuck the wheel well liner back behind the tire to expose the three hex bolts in the seam between the fender and front fascia. Use a 10mm socket to remove them. See Figure 5.

**Repeat steps 4-6 on the driver's side of the vehicle.**



Figure 4.

7. Disconnect the main wire harness and camera harness (if equipped) connected to the side marker lamps on the passenger's side of the fascia. See Figures 6 and 7.
8. Gently pull the front fascia assembly up and away from the vehicle to release the trim clips around the headlamps, shown in Figure 1.



Figure 5.



Figure 6.



Figure 7.

9. Once the Fascia has been removed, set it down on a scratch free surface. Use a trim pry tool to gently remove the OEM Ford emblem from the center of the grille as shown in Figure 8.



Figure 8.

10. Once the OEM emblem has been removed, use a screw driver to carefully remove the trim clips from the OEM emblem, as shown in Figure 9. Save these in a safe place, as they will be reused in the installation of the Putco Luminux Emblem.



Figure 9.

11. Use a 1" hole saw to carefully drill a hole into the grille in the location shown in Figure 10. Deburr the hole after drilling to eliminate sharp edges.



Figure 10.

12. Obtain the Putco Luminix LED Emblem from your kit, and the trim clips that were removed from the OEM emblem in step 9. Install the trim clips onto the mating tabs on the Putco Luminix LED Emblem, as shown in Figure 11.
13. The Putco Luminix LED Emblem can now be installed onto the grille. Feed the 2-pin connector and harness on the emblem through the hole previously drilled in the grille and then push the emblem and trim clips onto the grille.

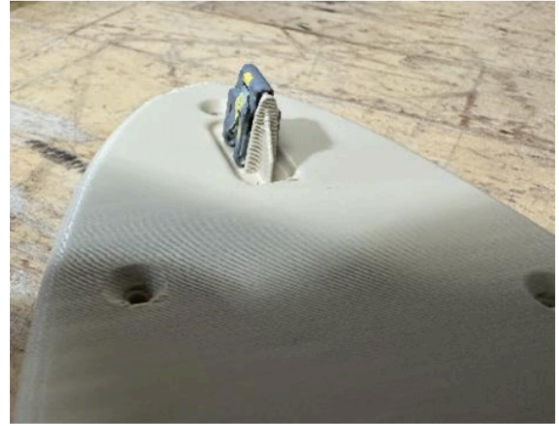


Figure 11.

**Wire Harness Installation:**

14. Disconnect the 2-pin connector from the vehicle's right-hand side marker, located on the removed fascia. See Figure 12.
15. Retrieve the quick connect emblem harness included in your kit, install the harness between the connector disconnected in the previous step, and the vehicle's right-hand side marker, as shown in Figure 13.
16. Route the other end of the quick connect harness towards the center of the grille. Follow the path of the existing OEM camera wiring harness, using zip-ties to secure the harness every 6 inches. See Figure 14 for reference.



Figure 12.



Figure 14.

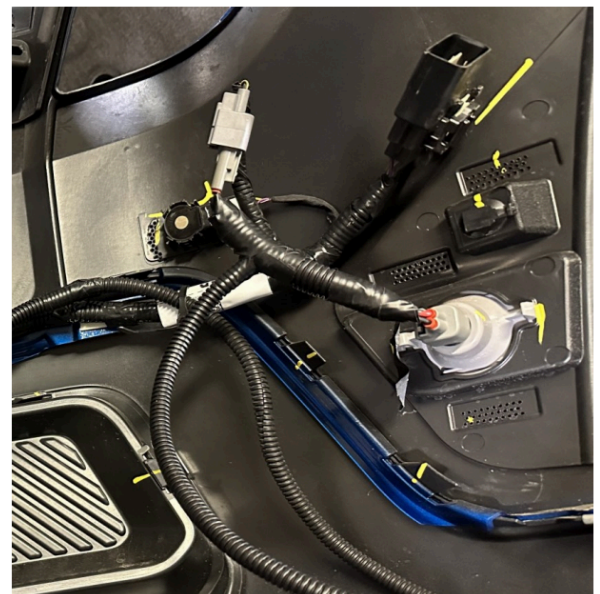


Figure 13.

***Fascia and Fender Reinstallation:***

- 17. Lift the front fascia assembly (with the Putco Luminix LED emblem installed) and carefully push it onto the front of the vehicle to re-engage the trim clips. Reconnect all OEM electrical connections.
- 18. Join the mating connectors on the Putco Luminix LED emblem and the quick connect emblem harness, see Figure 15.

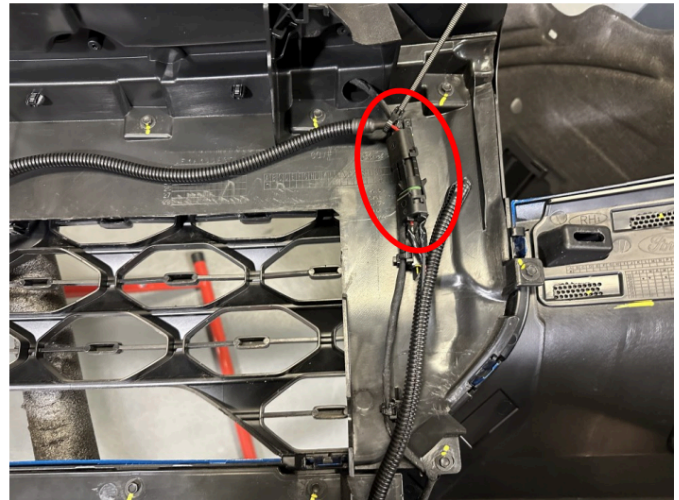


Figure 15.

- 19. Reinstall the five 7mm hex screws in the top of the fascia that were uninstalled in step 1. Torque to 4.1 N-m, see Figure 16.
- 20. Reinstall the four 10mm hex screws in the top of the fascia that were uninstalled in step 2. Torque to 4.1 N-m, see Figure 16.
- 21. Reinstall the eight screws on the bottom of the grille that were uninstalled in step 3. Torque to 2.5 N-m, see Figure 16.
- 22. Reinstall the three screws on each side of the fascia that were removed in step 6. Torque to 11 N-m, see Figure 16.

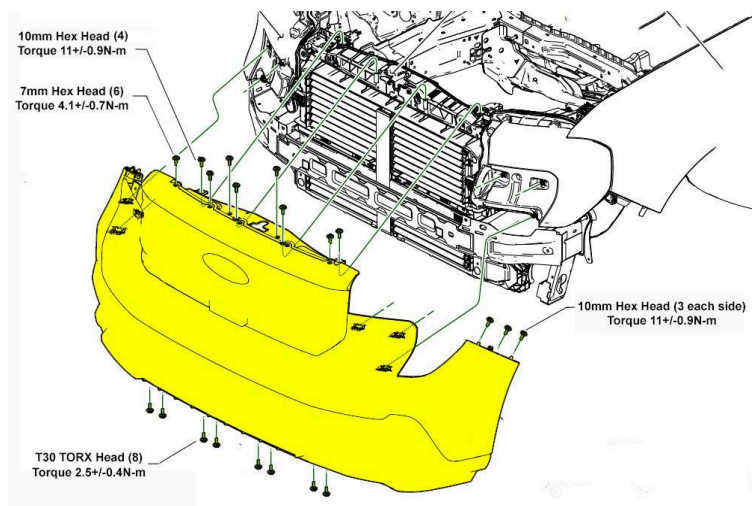


Figure 16

- 23. Secure the remaining loose portions of the harness with zip-ties.
- 24. Untuck the passenger's side wheel well liner.
- 25. Reinstall the three screws and four push-pins in the passenger's side fender liner that were uninstalled in steps 4 and 5. Torque fasteners to 1.5 N-m.

Repeat steps 23-25 for the driver's side of the vehicle.

26. Verify the functionality of the Putco Luminix LED emblem. The emblem should illuminate with the vehicle's side marker, see Figure 18.
27. Inspect the vehicle's right-hand side and left-hand side marker to ensure they illuminate when turned on, see Figure 17.

**Congratulations on successfully installing your new Putco Luminix LED emblem for the 2025+ Ford Maverick, enjoy!**



Figure 17.



Figure 18.

**WARNING:**

Final inspection required. Inspect product was properly installed and all installation instructions were followed.



**Ford Licensed Accessories by Putco LIMITED WARRANTY**

All Ford part numbers provided by Putco are warranted to be free from defects in materials or workmanship on products properly installed per the installation instructions provided with the product. This warranty covers repair or replacement of any defective product at no charge during the applicable warranty period listed below. Labor for replacement or service of defective product is not paid or reimbursed by Putco.

<b>WARRANTY PERIOD</b>		
	<b>USA</b>	<b>Outside USA</b>
Product which appears on the New Vehicle Monroney Label (window sticker)	3 years or 36,000 miles whichever comes first	3 years or 60,000 kilometers whichever comes first
Product not purchased at time of new Ford vehicle purchase	Whichever of the following two options is greater: 1) 2 years/unlimited mileage or 2) The remainder of the new vehicle warranty	Whichever of the following two options is greater: 1) 2 years/unlimited kilometers or 2) The remainder of the new vehicle warranty

This limited warranty does not cover any damage, defect or malfunction caused by misuse, abuse, accident, improper installation, modification, or improper or lack of maintenance. Incidental and consequential damages are not recoverable under this warranty. This warranty offers you specific legal rights. You may have additional or other rights as which vary from state to state or province to province.

If you experience a warranty issue with this product please visit your Ford dealer. If the repair is covered by the warranty above and completed by the dealership, labor is also covered -- Ford Warranty and Policy – Section 3.

Please note that Putco has replacement component parts available to assist consumers and dealers to resolve warranty and non-warranty issues as quickly as possible.

*Note to dealer:*

*Ford dealers should contact Putco by phone at 1-800-247-3974 or by email to: support@putco.com*