

2025+ Expedition Emblem Installation Instructions

Congratulations on your purchase of a high quality PUTCO product. Should you need any application or technical assistance, or to obtain missing parts, feel free to call us at: 1-800-247-3974

Monday-Friday 8:00 a.m. - 5:00 p.m. (Central Standard Time)

Contact your PUTCO dealer for other quality accessories.

Please read all instructions before installation and verify that all parts are included.

Tools Needed:

- Flat head screwdriver
- Trim removal/pry tool
- T20 torx
- 10mm socket/wrench
- 8mm socket/wrench
- Phillips head screwdriver
- Zip-ties

Front Fascia removal:

1: Open the hood of your vehicle to expose the engine bay.

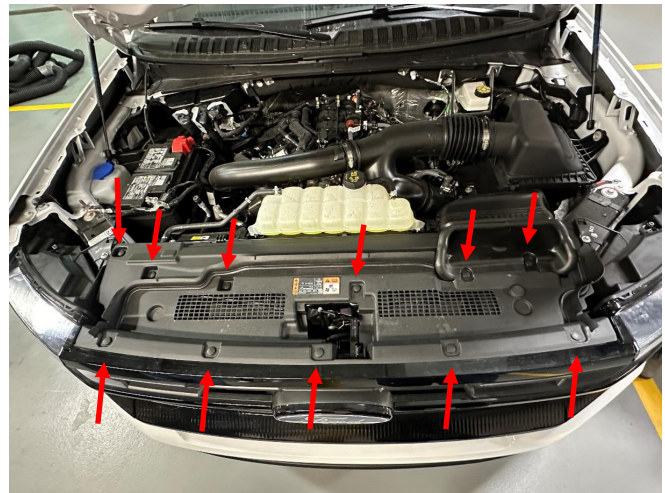


Figure 1.

2: Use a flathead screwdriver or trim removal tool to remove the 11 push pins holding the plastic shroud on top of the vehicle's fascia. See Figure 1 for pin locations.

3: remove the plastic shroud and set it aside.

4: Remove the four bolts at the top of the grille, shown in Figure 2, using a 10mm socket or wrench.

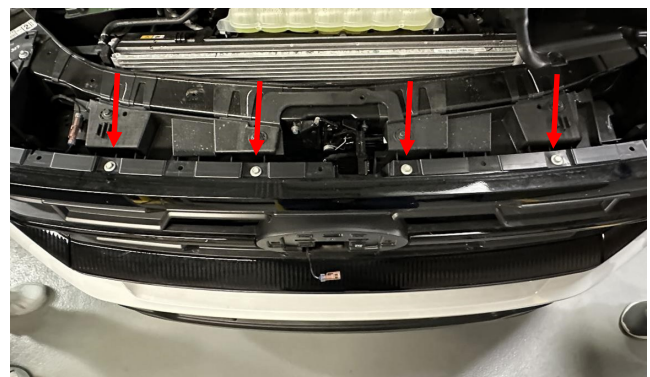


Figure 2.

5: Use a plastic trim removal tool to gently disengage the clips on the vehicle's grille around both headlights as shown in Figure 3.



Figure 3.

6: Once all the clips have been disengaged, pull the top of the vehicle's grille back away from the vehicle, the grille does not need to fully removed.

7: Using a trim removal tool, gently pry the vehicles OEM emblem away from the vehicle's grille, as shown in Figure 4.



Figure 4.

8: Remove the 1-pin connector from the camera on the OEM emblem. See Figure 5.

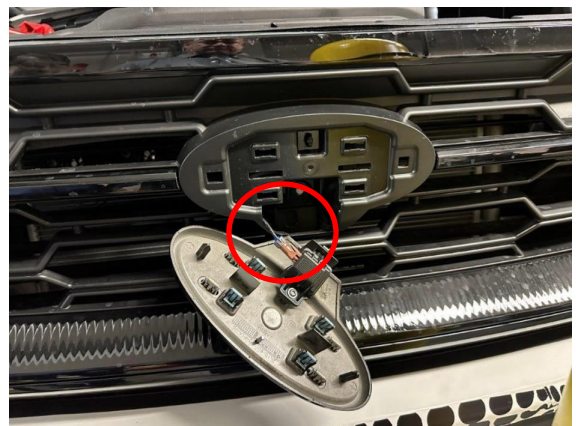


Figure 5.

9: Once the emblem has been removed from the vehicle, use a flathead screwdriver to gently remove the four spring clips on the backside of the OEM emblem.

10: Remove the camera and bracket from the OEM emblem using a T20 Torx driver.

11: Obtain the Luminix Illuminated emblem from your kit and install the four spring clips removed in the previous step to the mating tabs on the backside, as shown in Figure 7.

12: Reinstall the camera and bracket onto the illuminated emblem using the self tapping Phillips head screw included in your kit.

13: Feed the 2-pin connector on the harness originating from the backside of the illuminated emblem through the spot shown in Figure 8, following the vehicles OEM front camera wire harness.

14: Feed the emblem wire harness straight upwards through the top of the grille and on top of the foam seal to the driver's side of the vehicle, as shown in Figure 9.

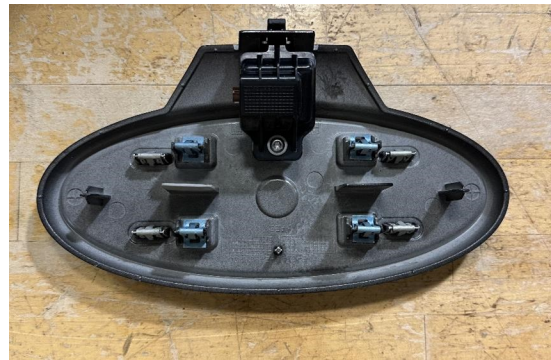


Figure 6.



Figure 7.

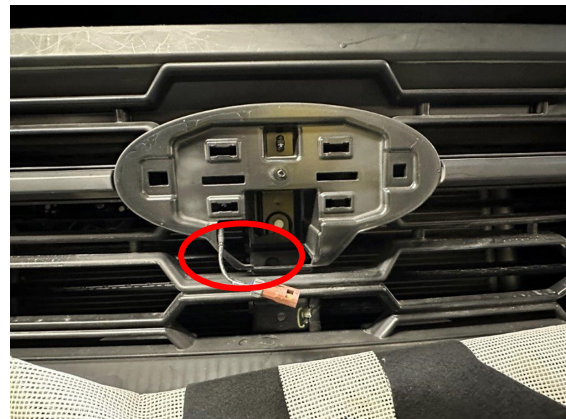


Figure 8.

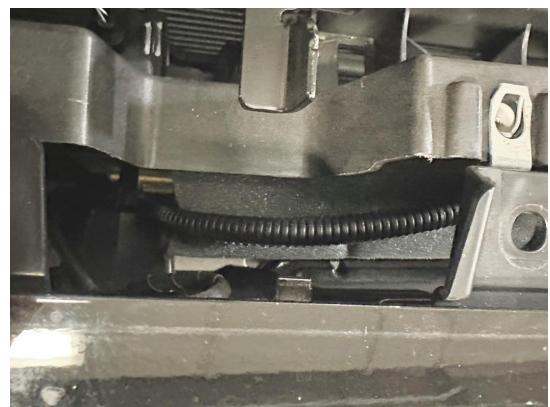


Figure 9.

15: Reconnect the 1-pin camera connector to the camera, now installed on the illuminated emblem.

16: Install the illuminated emblem to the vehicle by pushing it into the vehicle's grille until the spring clips on the backside snap into place.

Wire harness installation:

17: Using an 8mm socket or wrench, remove the air duct in front of the air filter box to gain access to the backside of the driver's side headlamp. See Figures 10 and 11.

18: Disconnect the Molex connector, shown in Figure 12, from the backside of the driver's side headlamp.

19: Retrieve the quick connect harness included in your kit and install it between the driver's side headlamp and the vehicle's wiring harness.



Figure 10.

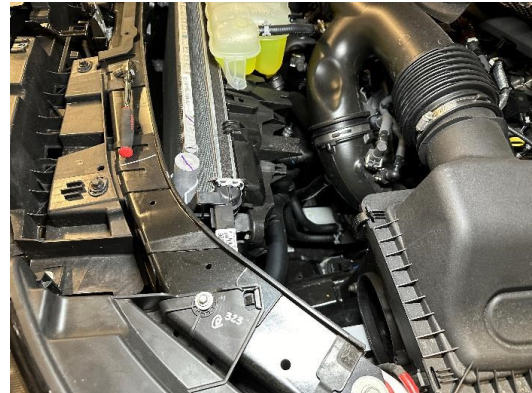


Figure 11.

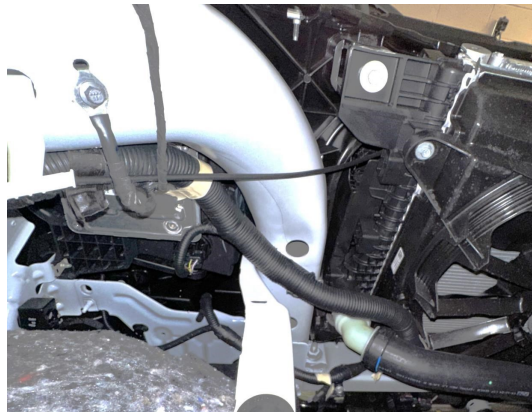


Figure 12.

- 20:** Route the quick connect harness up and around the headlamp as shown in Figure 13.
- 21:** Join the mating 2-pin connectors on the quick connect harness and the illuminated emblem.
- 22:** Verify the emblem and headlamps function correctly, the emblem should illuminate with both headlamps.
- 23:** Secure the wiring harnesses every 5-10 inches using zip-ties.

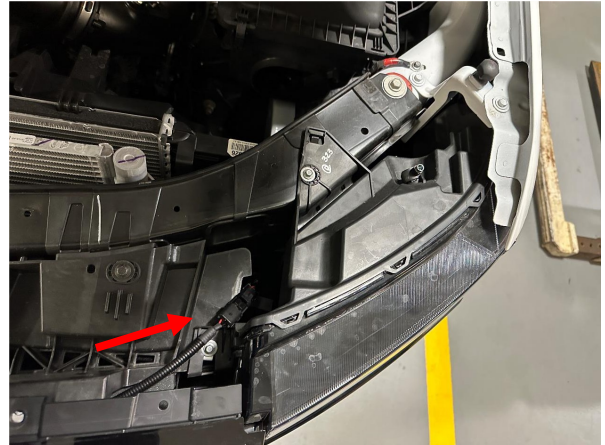


Figure 13.

Fascia and Grille Reinstallation:

- 24:** Reinstall the air duct removed in step 17.
- 25:** Push the grille back into the fascia of the vehicle to reengage the clips.
- 26:** Reinstall the four bolts at the top of the grille that were uninstalled in step 4, using a 10mm socket or wrench.
- 27:** Reposition the plastic shroud that was uninstalled in Step 3, and reinstall it using the 11 push-pins uninstalled in Step 2.
- 28:** Close the hood of your vehicle.
- 29:** Verify all parts removed during the installation process, excluding the OEM emblem, have been reinstalled before driving the vehicle.



Figure 14.

Congratulations on successfully installing your new Putco Luminix LED emblem for the 2025+ Ford Expedition, enjoy!

WARNING:

Final inspection required. Inspect product was properly installed and all installation instructions were followed.



Ford Licensed Accessories by Putco LIMITED WARRANTY

All Ford part numbers provided by Putco are warranted to be free from defects in materials or workmanship on products properly installed per the installation instructions provided with the product. This warranty covers repair or replacement of any defective product at no charge during the applicable warranty period listed below. Labor for replacement or service of defective product is not paid or reimbursed by Putco.

WARRANTY PERIOD		
	USA	Outside USA
Product which appears on the New Vehicle Monroney Label (window sticker)	3 years or 36,000 miles whichever comes first	3 years or 60,000 kilometers whichever comes first
Product not purchased at time of new Ford vehicle purchase	Whichever of the following two options is greater: 1) 2 years/unlimited mileage or 2) The remainder of the new vehicle warranty	Whichever of the following two options is greater: 1) 2 years/unlimited kilometers or 2) The remainder of the new vehicle warranty

This limited warranty does not cover any damage, defect or malfunction caused by misuse, abuse, accident, improper installation, modification, or improper or lack of maintenance. Incidental and consequential damages are not recoverable under this warranty. This warranty offers you specific legal rights. You may have additional or other rights as which vary from state to state or province to province.

If you experience a warranty issue with this product please visit your Ford dealer. If the repair is covered by the warranty above and completed by the dealership, labor is also covered -- Ford Warranty and Policy – Section 3.

Please note that Putco has replacement component parts available to assist consumers and dealers to resolve warranty and non-warranty issues as quickly as possible.

Note to dealer:

Ford dealers should contact Putco by phone at 1-800-247-3974 or by email to: support@putco.com