



Installation Instructions

For Yellow Jacket Quick Connect Harness



For proper installation and best possible fit, please read all instructions BEFORE you begin.

Important Information

BEFORE you begin the installation process:

- Carefully read all instructions.
- Verify that all parts are included by checking the contents of your kit.

If any parts are missing or appear damaged, please contact our customer service team for assistance.

Customer Service

For support, please contact the Putco team, available Monday to Friday 8:30 AM to 5PM (Central Time).

1 800 247 3974

support@putco.com

Supported Vehicles

For The Putco Quick Connect Harness for amber safety lighting is universal and will work on a variety of vehicles and machinery. The harness will function when the ring terminals are connected to any 12V source or battery.

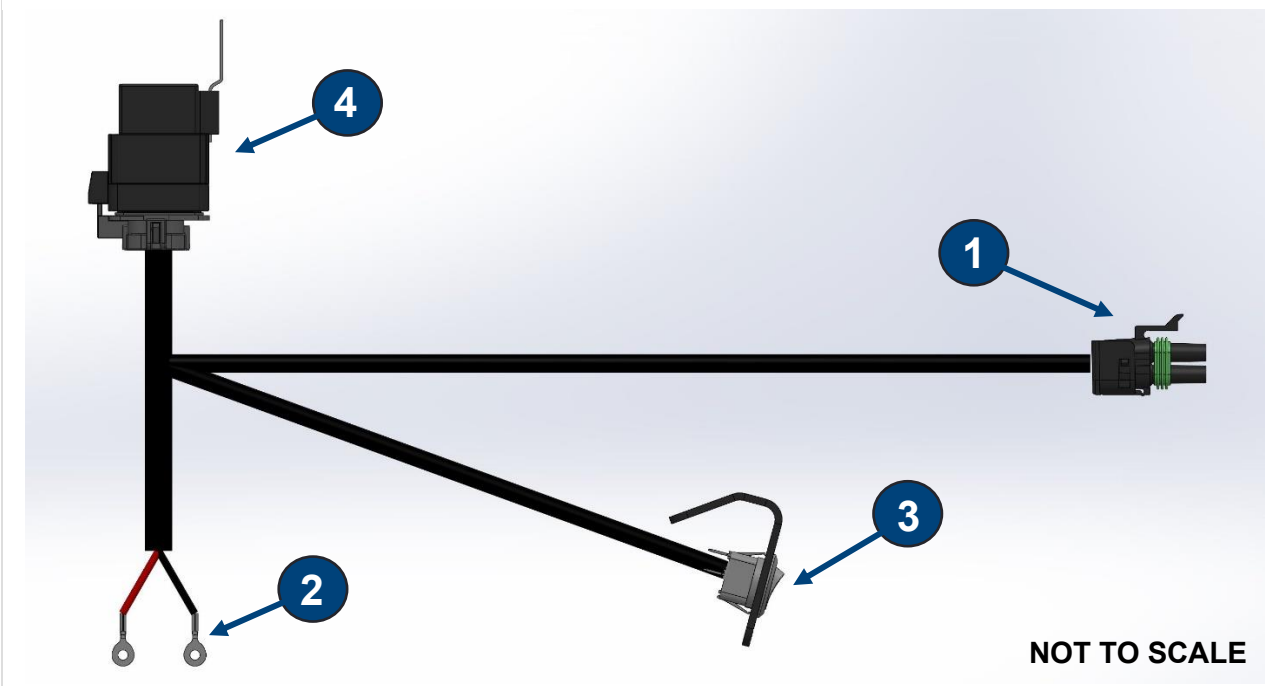
Recommended Tools and Supplies

The required tools to install the Quick Connect Harness will vary based on your specific vehicle and installation.

Kit Contents

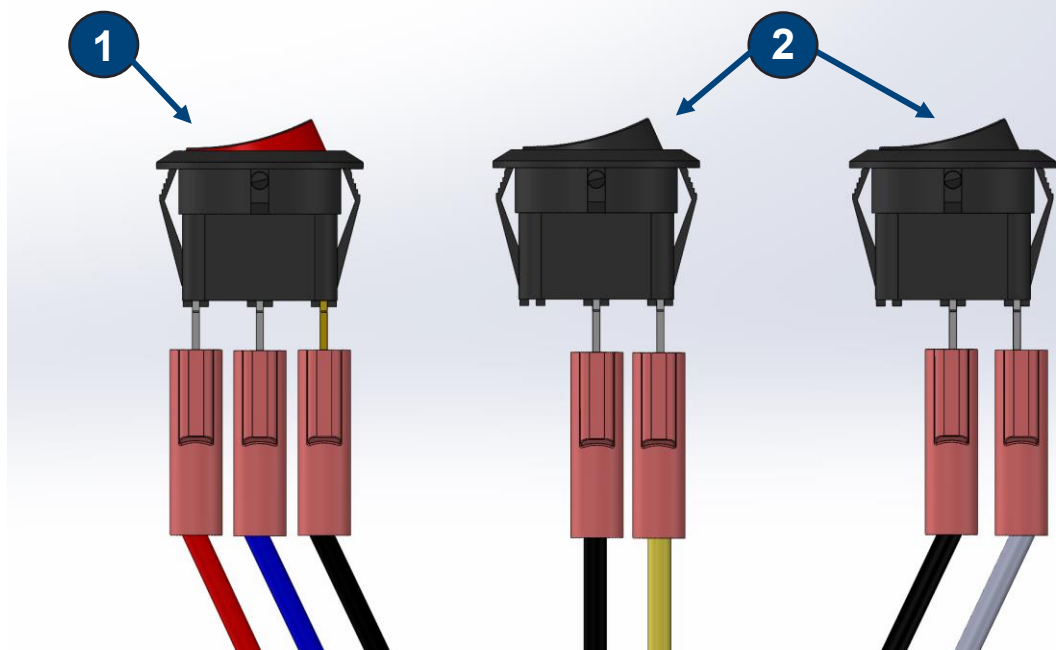
Yellow Jacket Light Bar with 4-Pin Connector	Quick Connect Harness	Switch Panel
Self-Tapping Screws	Zip-Ties	

Harness Diagram



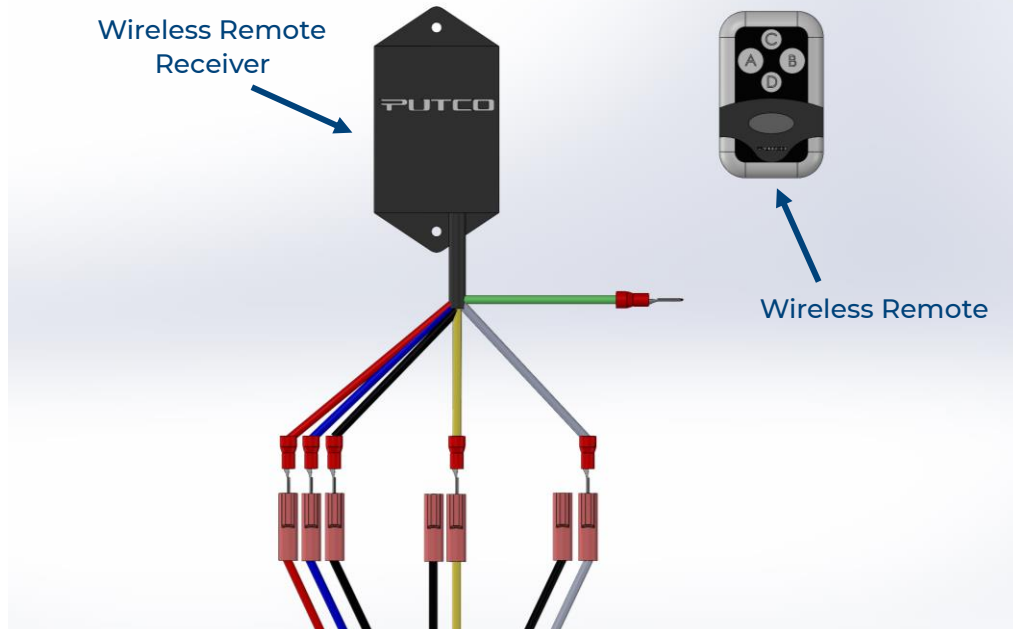
1	4-Pin Weather Pack Connector	Connect to light bar.
2	Ring-Terminals	Connect to battery terminals.
3	Switch Panel	Mount in Cab.
4	Relay	Mount in engine bay or near battery location.

Switch Panel Diagram



1	On-Off Rocker Switch	PIN 1: RED PIN 2: BLUE PIN 3 (GOLD): BLACK
2	Pattern Momentary Switch	PIN 1: YELLOW PIN 2: BLACK
	Color Momentary Switch	PIN 1: GREY PIN 2: BLACK
NOTE:	<p>The two momentary switches (2) are identical and either can be connected to the Yellow or Grey wires.</p> <p>All Black wires are identical and can be connected to any of the switches interchangeably.</p>	

Wireless Remote Diagram



The Yellow Jacket Quick Connect Harness can be used with the included switches, or with the separately purchased wireless remote (Part #: 93020). If using the wireless remote, remove the spade connectors from the back side of the included switches, and connect them to the mating terminals on the wireless remote receiver leads by matching the wire colors. See the above diagram for more details. The functions of the remote are shown below:

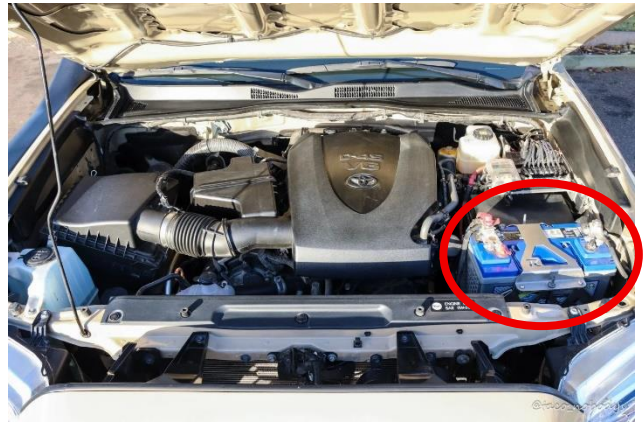
BUTTON	FUNCTION	DESCRIPTION
A	ON/OFF	Press once to toggle the light bar on or off
B	PATTERN	Press once to change the pattern of the light bar
C	COLOR	Press once to change the color of the light bar
D	Not used	Not used

Step by Step Installation

1. Start by mounting the Yellow Jacket light bar included in your kit in the desired location on your vehicle. If you ordered a Putco mounting bracket, please follow the instructions included in your bracket kit.



2. Identify the location of your vehicle's battery. If necessary, remove the battery terminal covers.



3. Identify a 1/4" positive stud on the battery, install the ring terminal on the Red wire of the Quick Connect Harness to the stud using a nut.



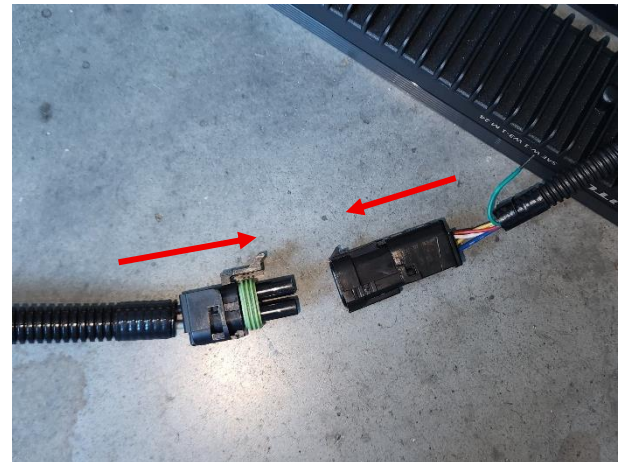
4. Identify a ¼" ground stud on the battery or chassis. Install the ring terminal on the Black wire of the Quick Connect Harness to the stud using a nut.



5. Identify the route from the battery terminals to the 4-pin connector on the end of the Yellow Jacket. Route the mating 4-pin connector on the Quick Connect Harness to the light bar. Depending on your vehicle and chosen installation path, this can mean running the 4-pin through the cab and behind the interior trim, or routing on the exterior of the vehicle.



6. Connect the 4-pin connector on the Yellow Jacket light bar to the mating connector on the Quick Connect Harness.



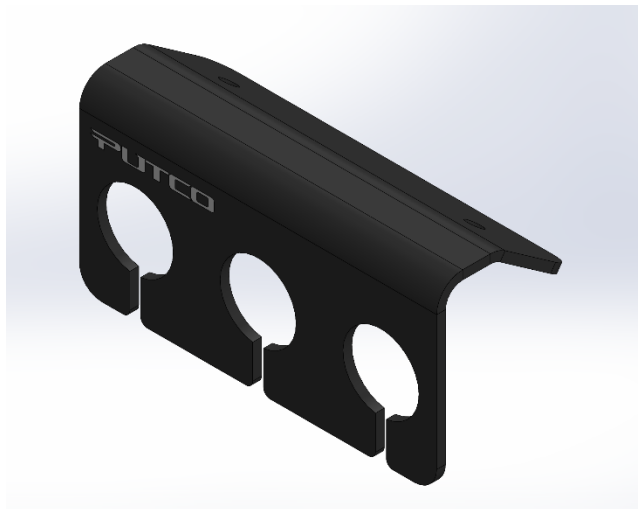
NOTE: Steps 7-9 of this guide pertain to the installation of the in-cab switch panel, if choosing to use the wireless remote, Follow the wireless remote instructions and diagram on Page 3 of this guide and skip to Step 10.

7. Identify the route from the battery terminals to the cab. Depending on your vehicle, you may need to disconnect the spade connectors from the back of the switches to pass through the firewall. See the switch panel wiring diagram at the start of this guide to ensure the switches are reconnected correctly.



8. Locate the switch panel bracket included in your kit. Mount this in the cab by removing the 3M tape backing and pressing firmly in the desired location. Your kit also comes with self-tapping screws that can optionally be used for a more secure mounting solution.

NOTE: Ensure there is nothing behind the switch panel location if choosing to use the self-tapping screws.



9. Install the switches to the mounted switch panel, ensure they function as intended.



10. Ensure the harness is free of any hot or moving parts and secure every 6-8 inches using the included zip-ties. Be sure to secure the relay in a safe location as well.



11. Reinstall any trim pieces removed. Ensure all parts are reinstalled and secure before driving the vehicle.



Congratulations on completing the installation of your Putco product!
For information regarding your warranty, please visit www.putco.com/warranty.

Issues? Please Contact Our Technical Support Team: 1 800 247 3974



WARNING: Final Inspection required. Inspect product was properly Installed and all installation instructions were followed.



For additional information, please visit our website at www.putco.com!

TROUBLESHOOTING

Problem	Possible Reason	Solution
Light bar will not toggle on and off, and the light on the on-off toggle switch will not light up.	Bad ground	Check that the voltage between the positive and negative studs used is ~12V, even with the vehicle switched off.
	Burnt fuse	Remove the Cap on the Delphi Pull-to-seat fuse holder, a few inches up from the ring terminal on the red wire. Check the fuse visually and for continuity with a multimeter. Replace with a 10A standard fuse if necessary.
Light bar will not toggle on and off, but switch LED is functioning.	Relay disconnected	Ensure the connection between the relay and the relay connector on the harness is fully seated.
	4-pin connector issue	Ensure the 4-pin Weather Pack connection between the harness and the light bar is fully seated, and that the pins and sockets on each connector are intact.
On-off toggle switch remains lit even when light bar is off	Incorrect spade connections	The Blue and Red wires on the on-off toggle switch need to be switched. See the switch panel diagram on Page 2 of this guide.
Switches will not function	Bad spade connections	Ensure the metal on the male and female spade connectors are in full contact with one another.